

CREALITY

Operating Instruction of CR-Scan 01

Shenzhen Creality Technology Co., Ltd



ABOUT US

Shenzhen Crealty 3D Technology Co.,Ltd is a global consumer-level 3D printing leading brand as a national high-tech enterprise, focusing on 3D printer research and production with the production line covering two series of FDM printing and Resin printing.

We boast more than 100 patents in consumer, industrial and educational 3D printers, the self-developed and manufacturing FDM and Resin 3D printers rank the pioneering row in the domestic market.

We has always been dedicated to the market application of 3D printer, provided the efficient and cost-effective 3D comprehensive 3D printing solution to the individuals, families, schools and enterprises.

Headquartered in Shenzhen with branches in Beijing, Shanghai, Wuhan and Chengdu, Crealty establishes the industry-university-research teaching and internship base with multiple colleges and universities, which has already extended our technological strength.

As a company of over 1000 personnel and production area of about 50,000 square meters, our annual output hits 1,000,000 units.

The progressive large-scale R&D center, 3D printing laboratory, Crealty Academy and modernized production line combined with 24 hours nonstop professional testing line and rigid quality system has ensured the product quality from its source.

Our products have been sold to 192 countries and regions, ranking the global 3D printer sales top list for a long time.

Since our foundation in 2014, the sales have been multiplied year by year and the major products have rowed in the top sales list for a long time and topped the sales on E-commerce platforms like Amazon, Tmall and JD.com.

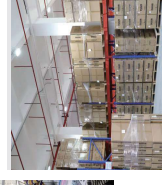
As the invisible champion in domestic consumer-level printing market, our overall strength has already far exceeded the peer enterprises in 3D printing industry.

100+
3D Printing Patents

50,000+ m²
Total Production Base

100+
Countries and Regions

1,000,000+
Annual Capacity units



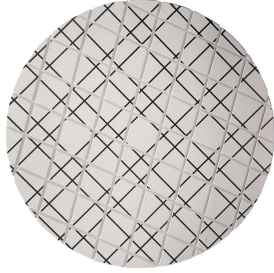
Device unboxing



host *1



turntable *1



turntable panel *1



tripod *1



turntable control cable *1



power cord *1



data cable *1



8G USB drive *1



handheld components *1



The handheld components will be shared on Creality Cloud, and you can use 3D printer to print.

Device Installation

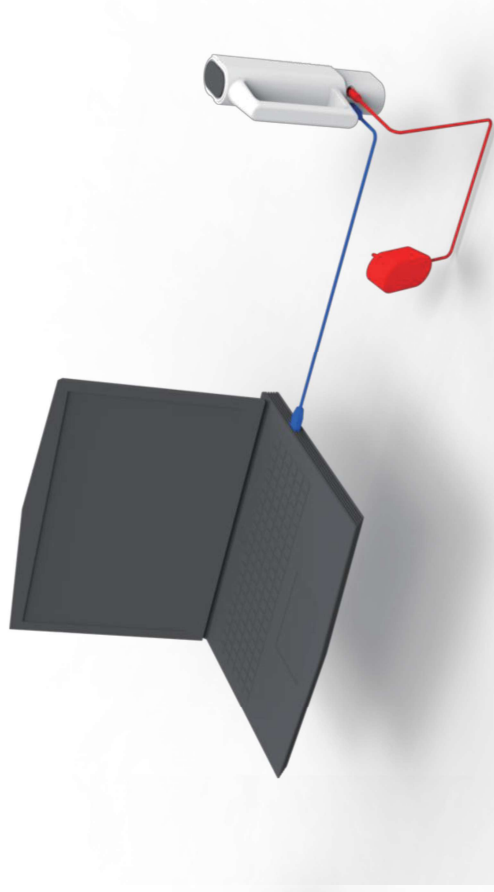
The device has two working modes, turntable mode and handheld mode.

Power cable
USB3.0 cable
Turntable control line



Turntable mode

Power cable
USB3.0 cable



Handheld mode



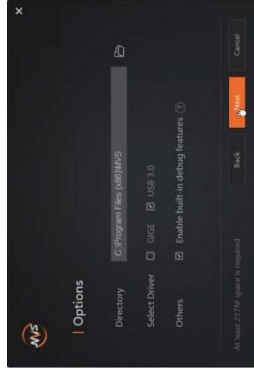
Note: Connect the USB 3.0 cable before connecting the device power cable when the computer boots up.

Driver Installation

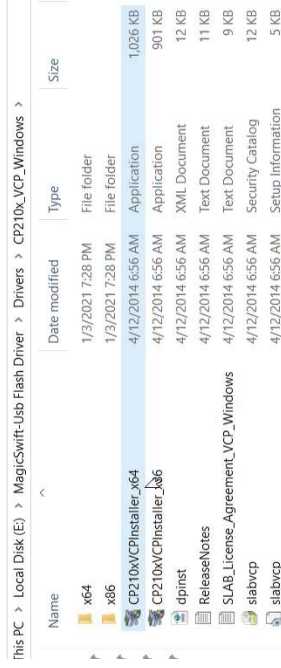
Install device camera driver and controller driver.



camera driver



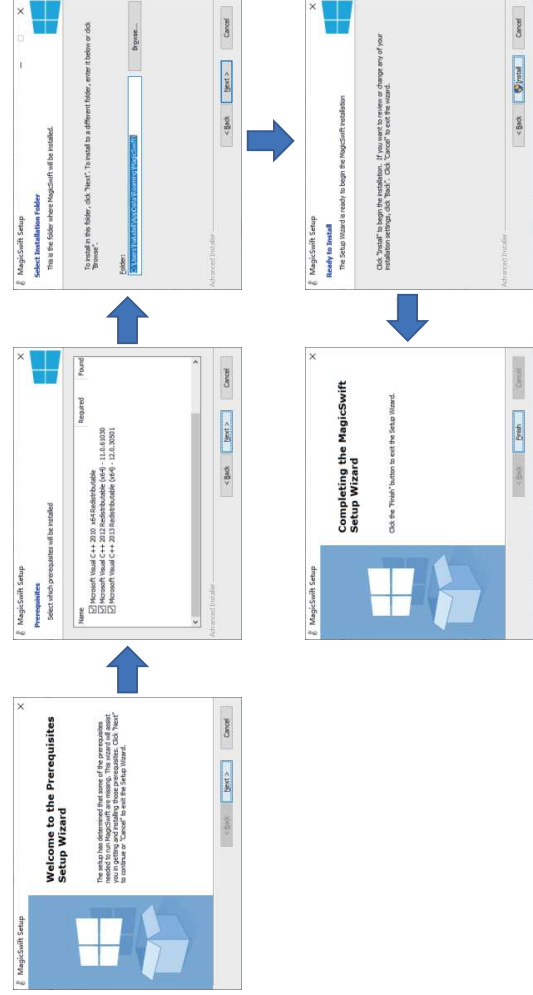
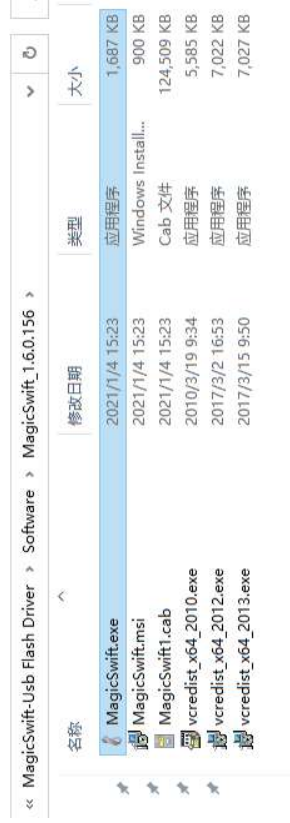
controller driver



Software Installation

Install the software and copy the device's supporting configuration file.

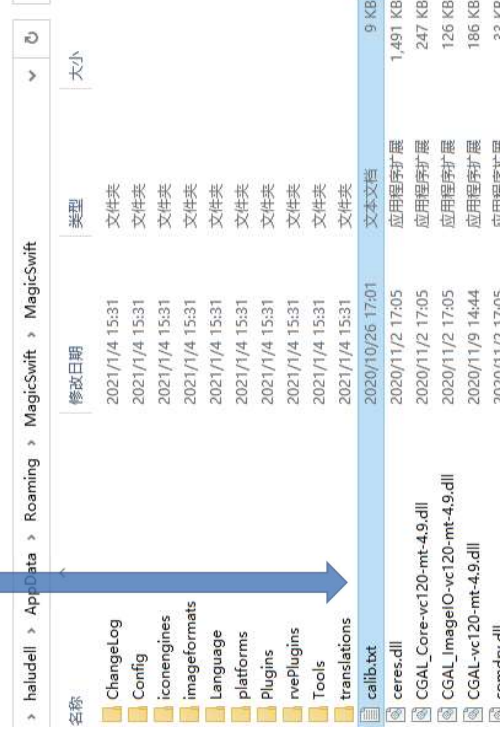
Installation Software



Copy configuration file

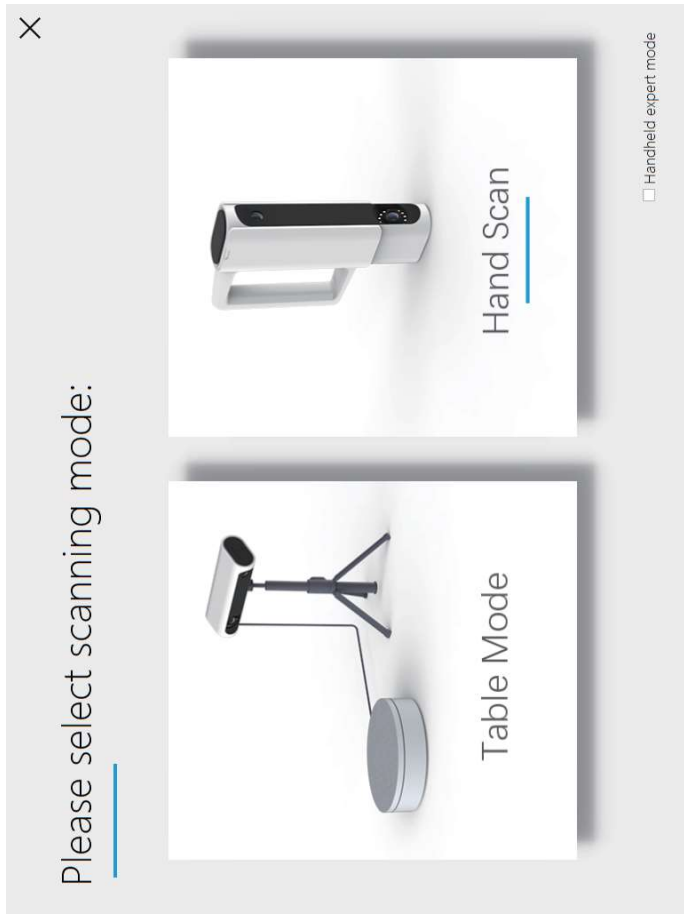
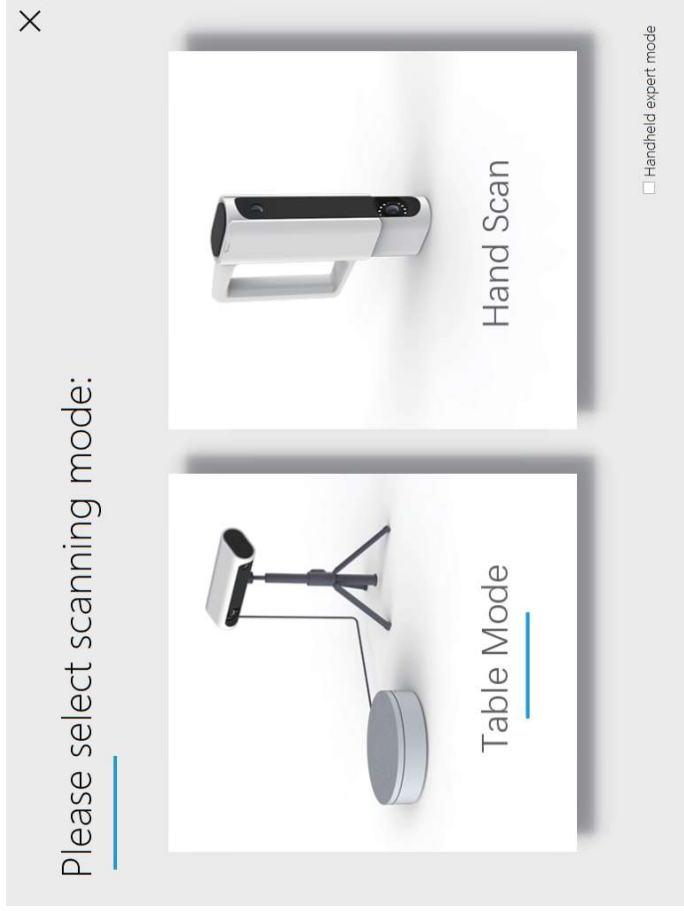


Copy and overwrite



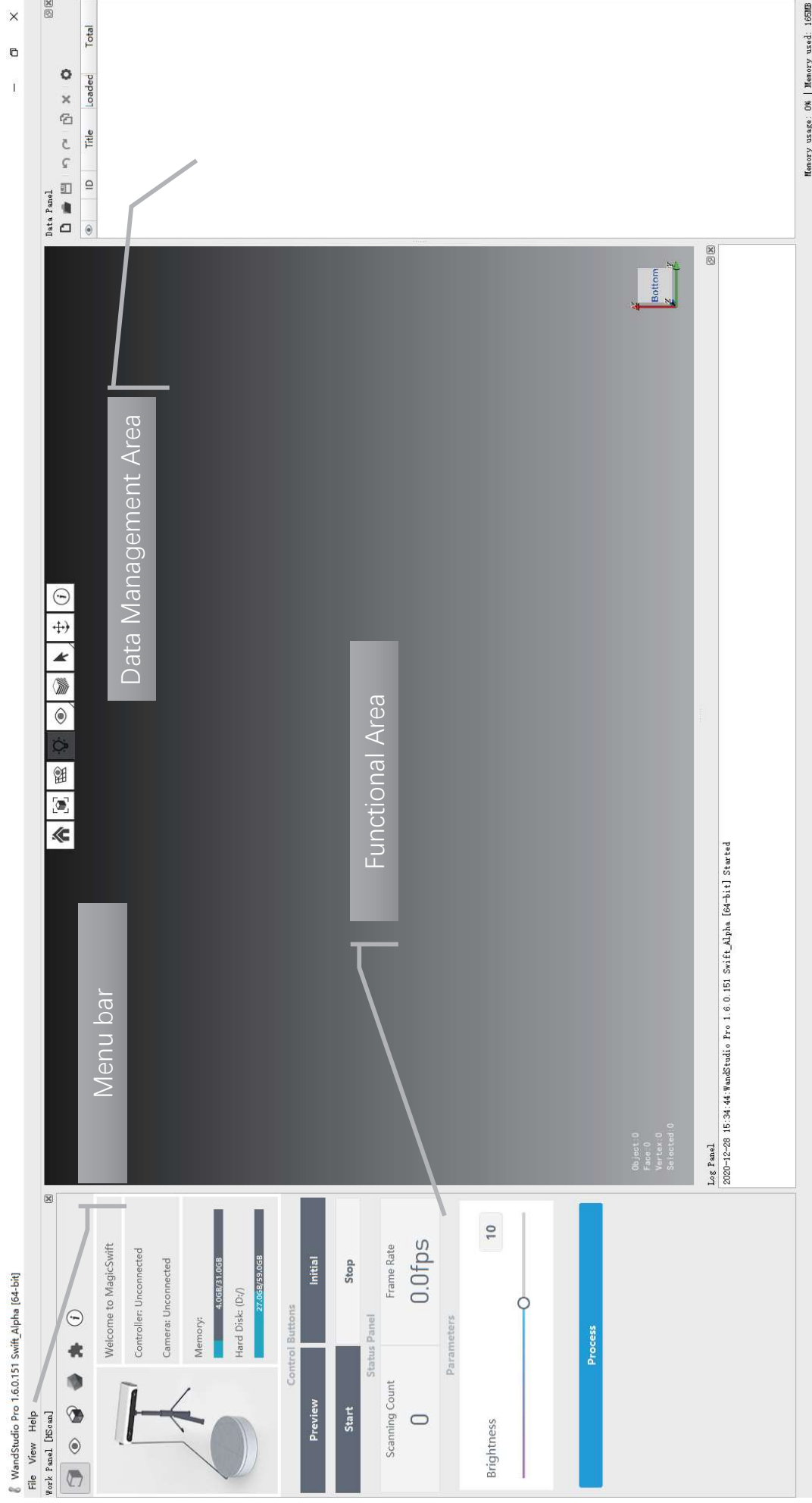
Launch Software

Start the software and select the turntable scanning mode or handheld scanning mode.



Software Interface

After selecting the scanning mode, enter the main interface of the software.



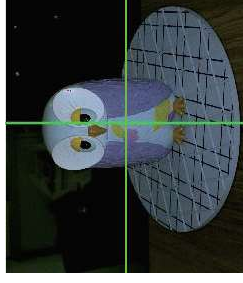
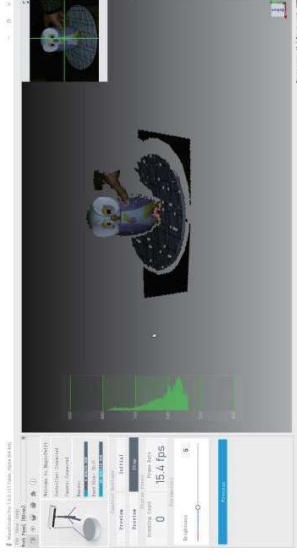
Turntable mode

Turntable mode can fully automatic scanning of objects around 100mm–300mm.

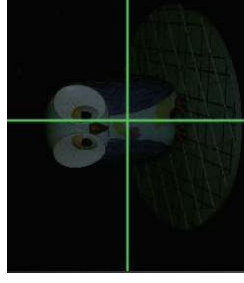


① Adjusting the device view

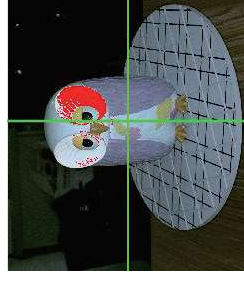
Adjust the distance and angle between the scanner and the turntable so that the object and the turntable are in the center of the 3D view and the object can be completely covered.



Good



Dark



Bright



② Initializing the turntable

Scanning of empty turntable, automatic positioning of turntable plane position.

The screenshot displays the WandStudio Pro 1.6.0.131 interface. The top-left corner shows the title bar and menu options (File, View, Help). The main window is titled "Work Panel [HTScan]".

System Information:

- Welcome to MagicSwift
- Controller: Connected
- Camera: Connected
- Memory: 4.0GB / 31.0GB
- Hard Disk: (C:) / 60.0GB / 118.0GB

Control Buttons:

- Preview (selected)
- Initial
- Stop (highlighted by a mouse cursor)

Status Panel:

- Status Panel
- Scanning Count: 0
- Frame Rate: 0.0fps

Parameters:

- Brightness: 8 (with a slider)

Process: A large blue button labeled "Process".

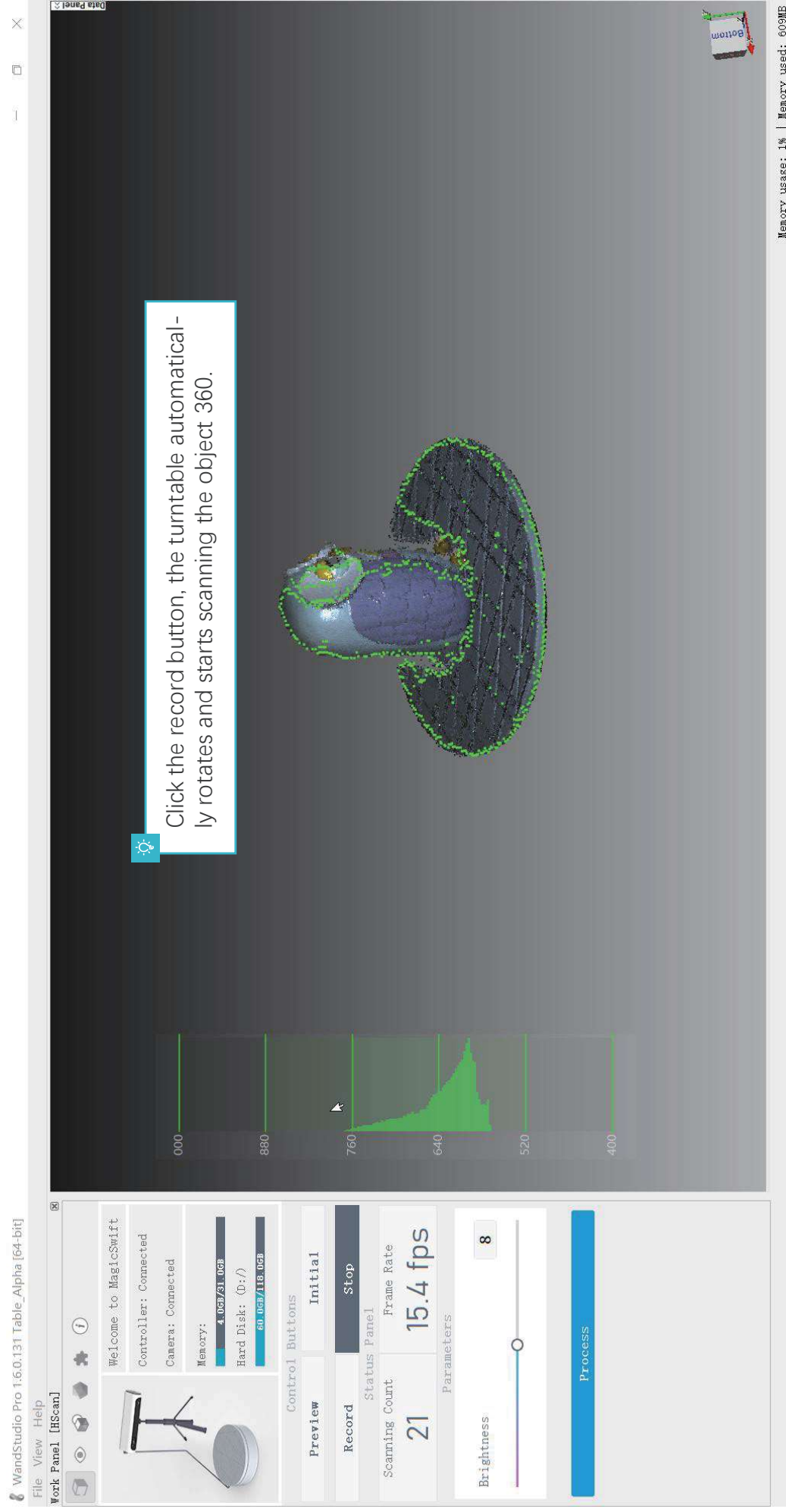
Data Panel (Right Side):

- A graph showing a green area under a curve, with the y-axis ranging from 000 to 880 and the x-axis from 760 to 400.
- A 3D visualization of a turntable with a red mesh overlaying the top surface.
- A text box with a gear icon: "Turntable recognition area Model turns red."
- A "Bottom" label with a red arrow pointing downwards.

System Tray (Bottom Right): Memory usage: 1% | Memory used: 472MB

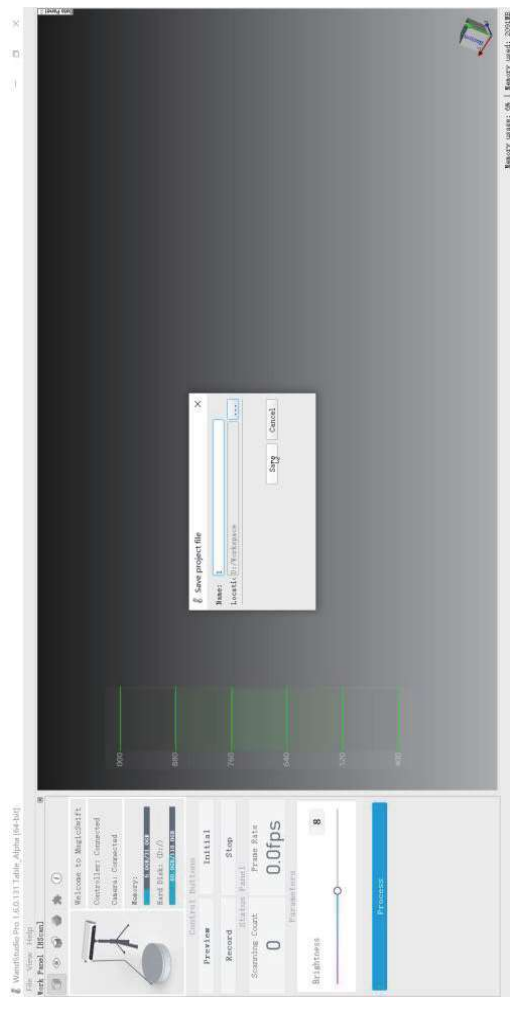
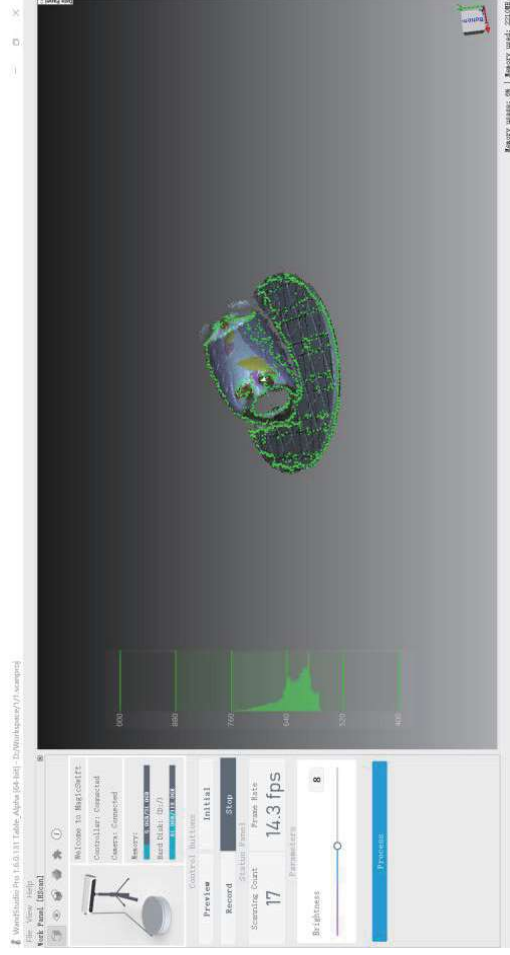
③ Start scanning

The scanned object is placed in the center of the turntable and starts scanning automatically.



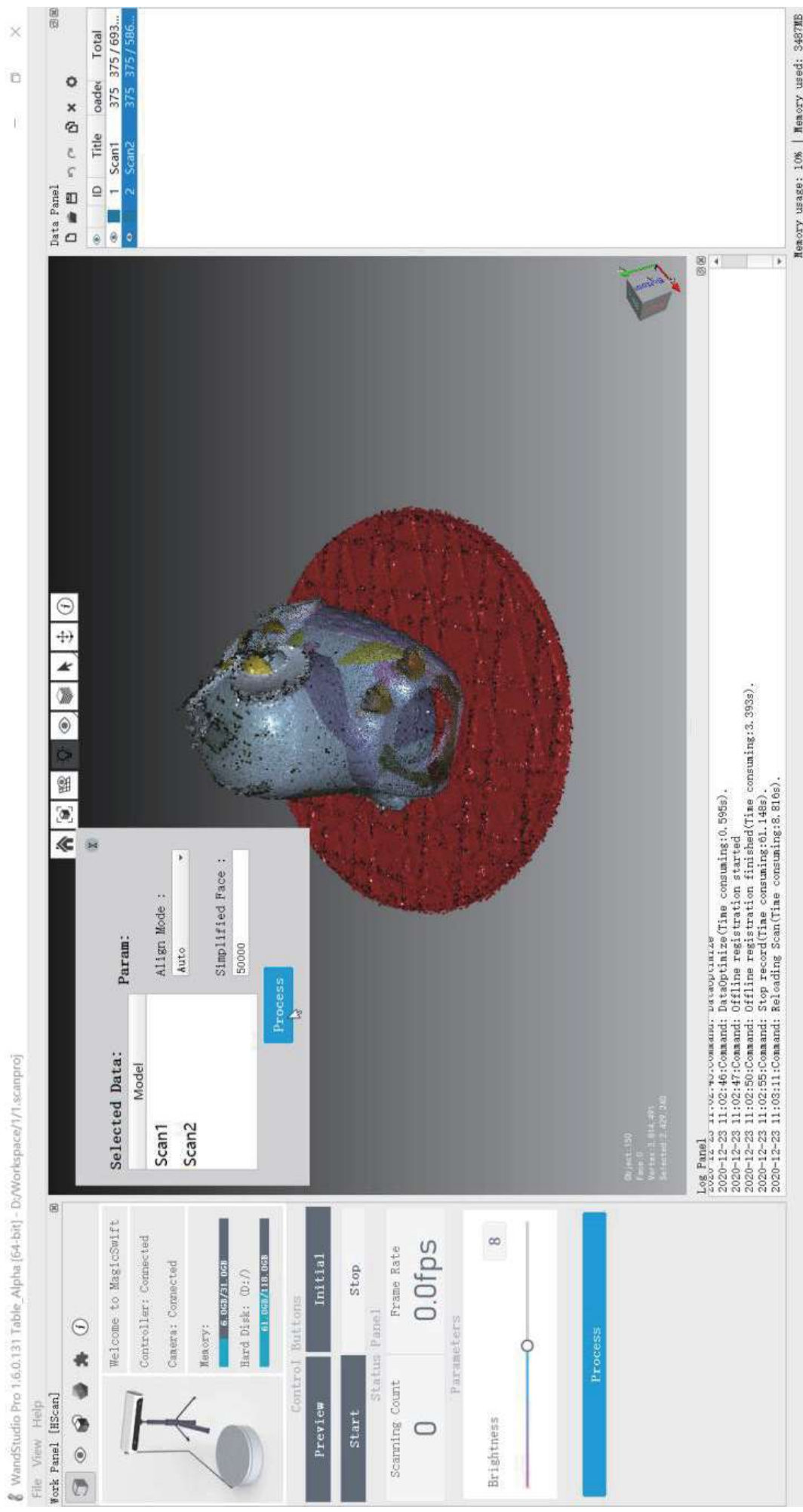
Scanning the second posture

Change the attitude of the scanned object and place it in the center of the turntable, click the record button, fill in the project name, and start automatic scanning.



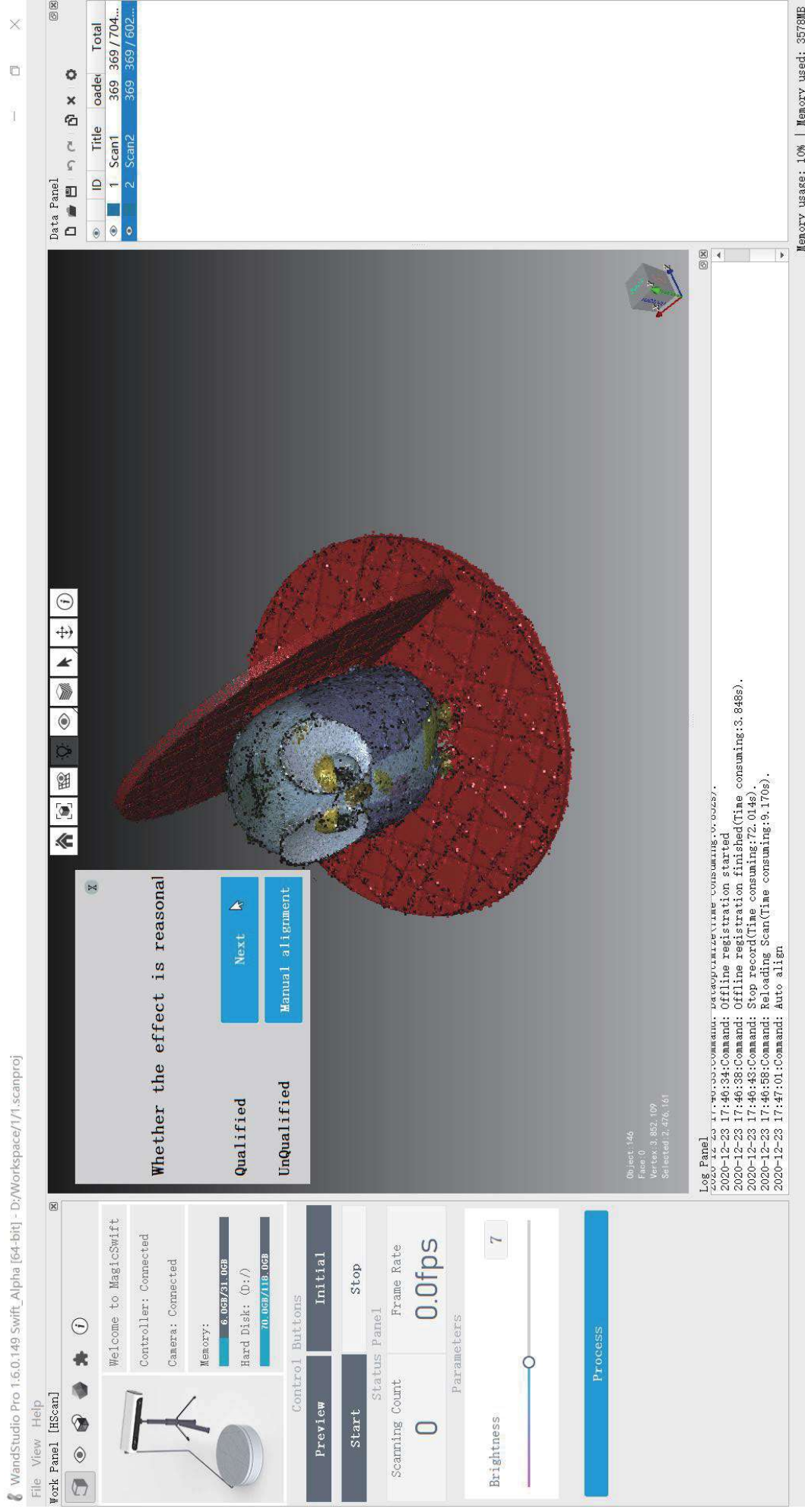
④ Processing data

Select scanned data for automatic processing.



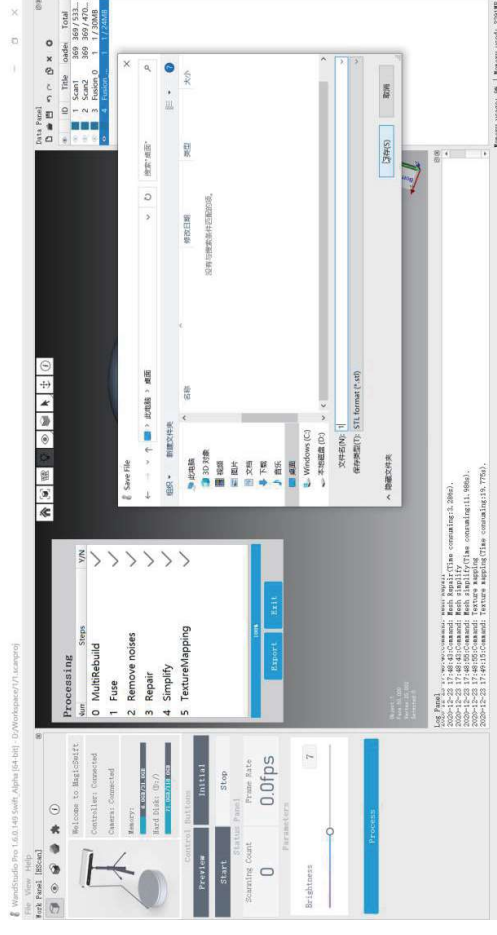
⑤ Automatic alignment

Check the auto-alignment effect and go to the next step of processing.



⑥ Complete processing

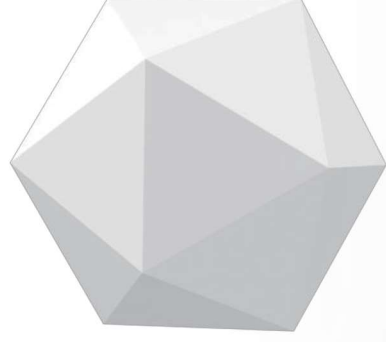
Automatic completion of all model processing and export of results data.



The stl format can be imported directly to the 3D printer.
The obj format allows you to get a model with textures.

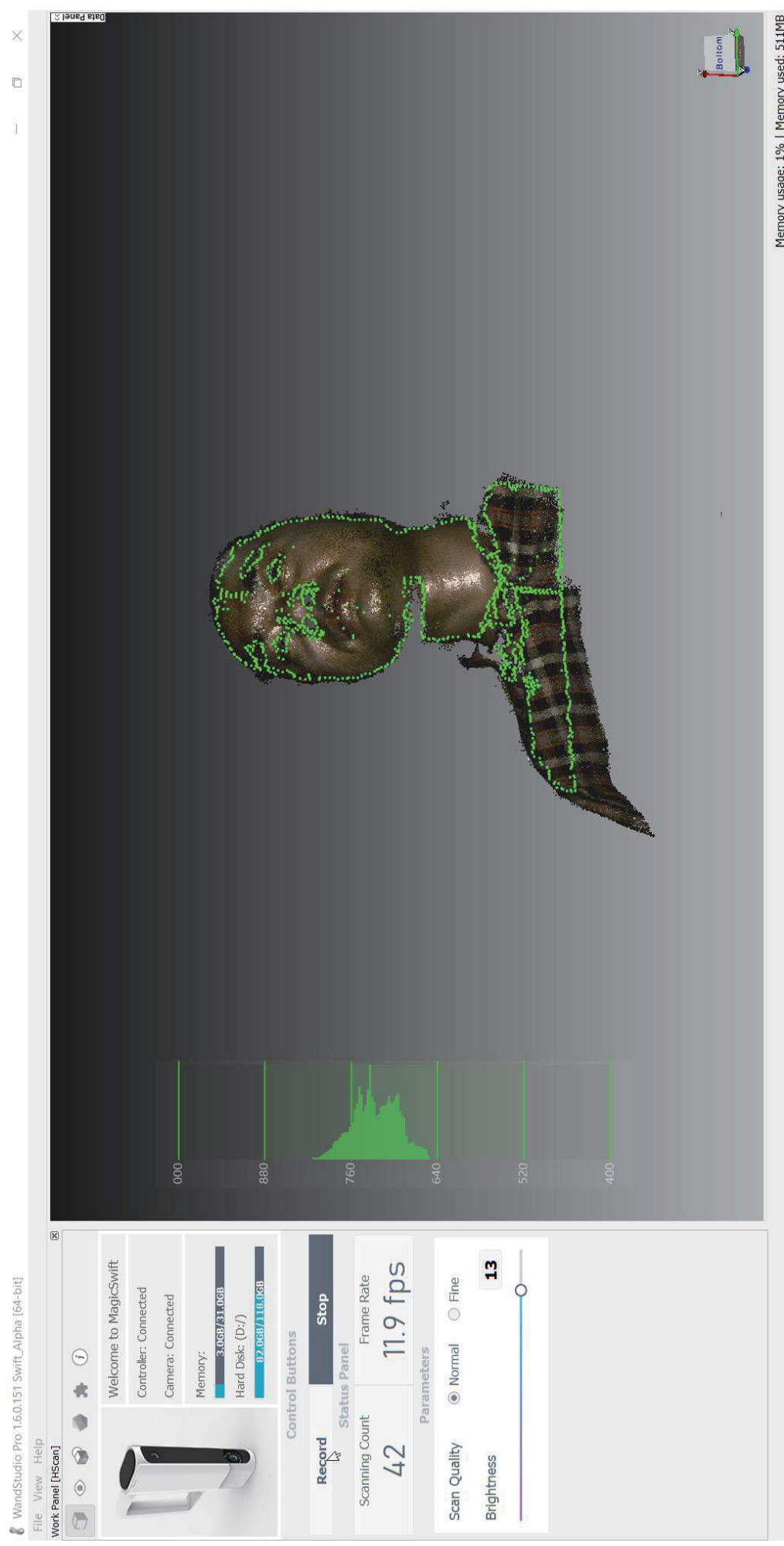
Handheld mode

Handheld mode allows flexible scanning of objects of different sizes.



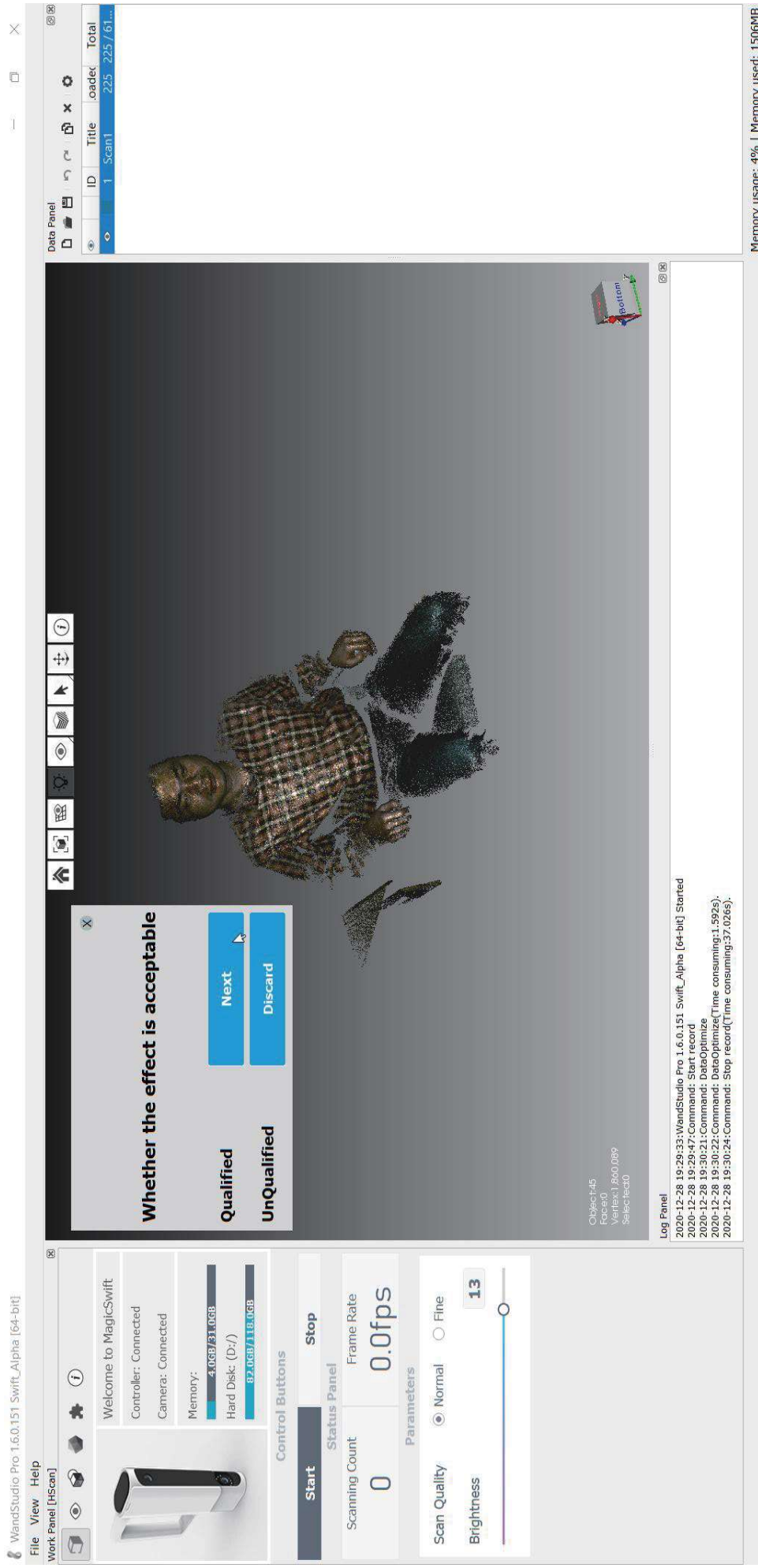
① Start scanning

Align the scanned object, adjust the brightness, and keep the object about 700mm away from the scanner.



② Finish scanning

After completing the scan, check if the scan mode is normal, and if it is, start automatic data processing. If not, delete the bottom data and start scanning again.

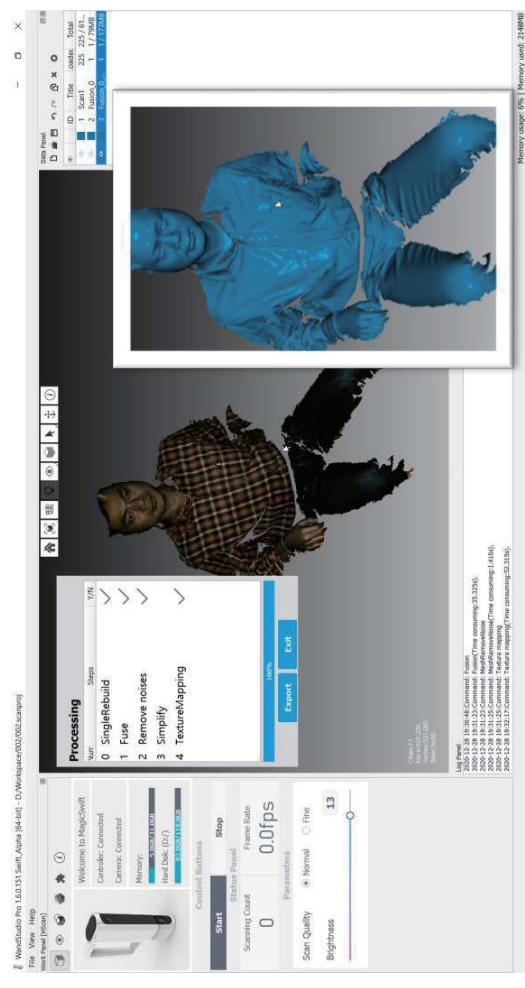
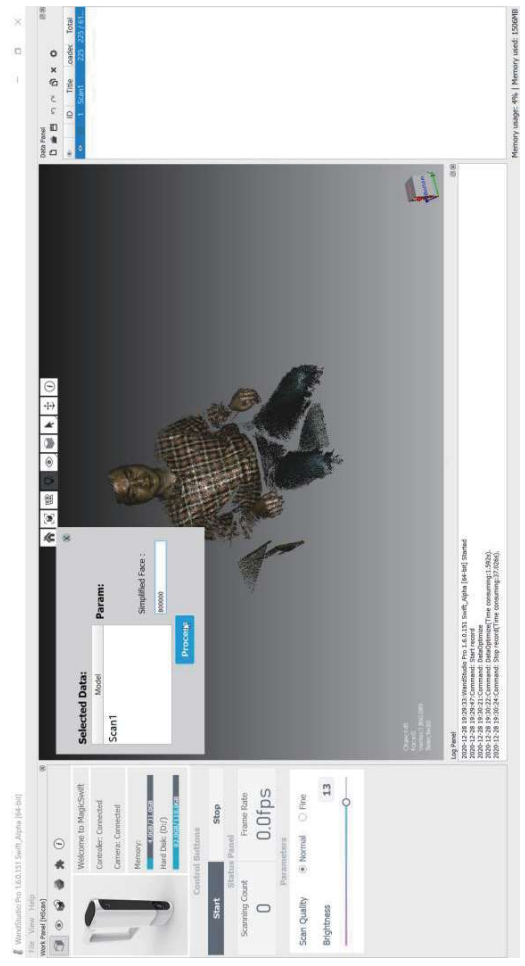


③ Automatic data processing

Click the Process button and the data will be processed automatically and textures will be applied.

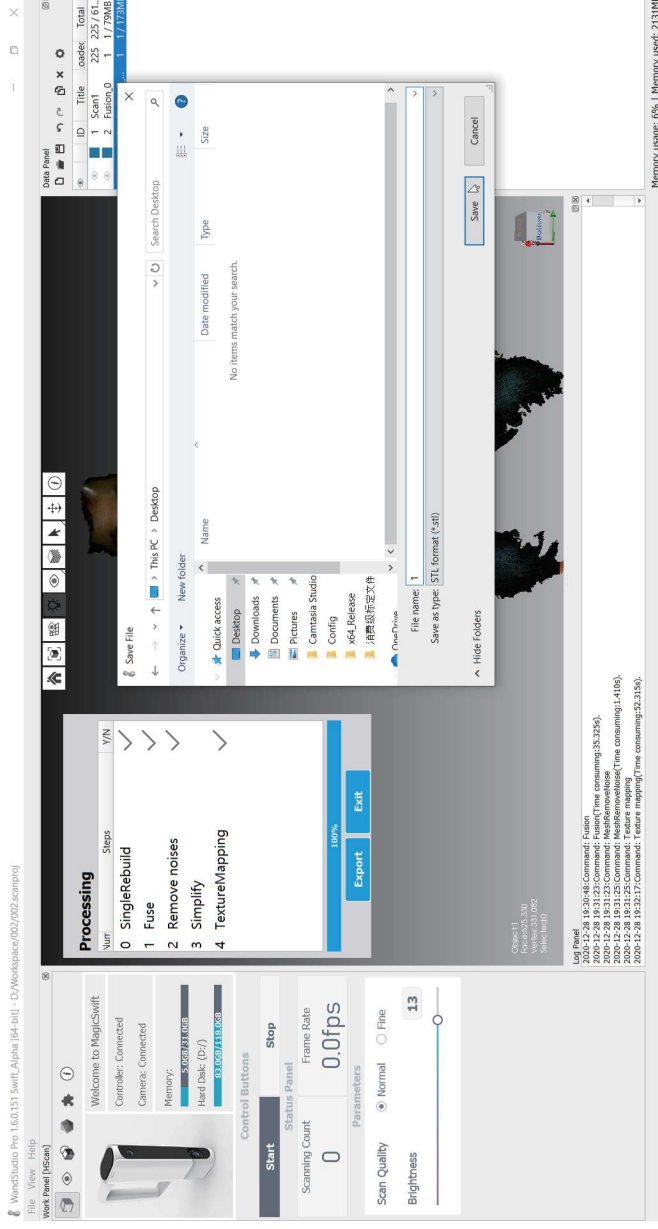


Click this button to toggle the model to display solid colors or textures.



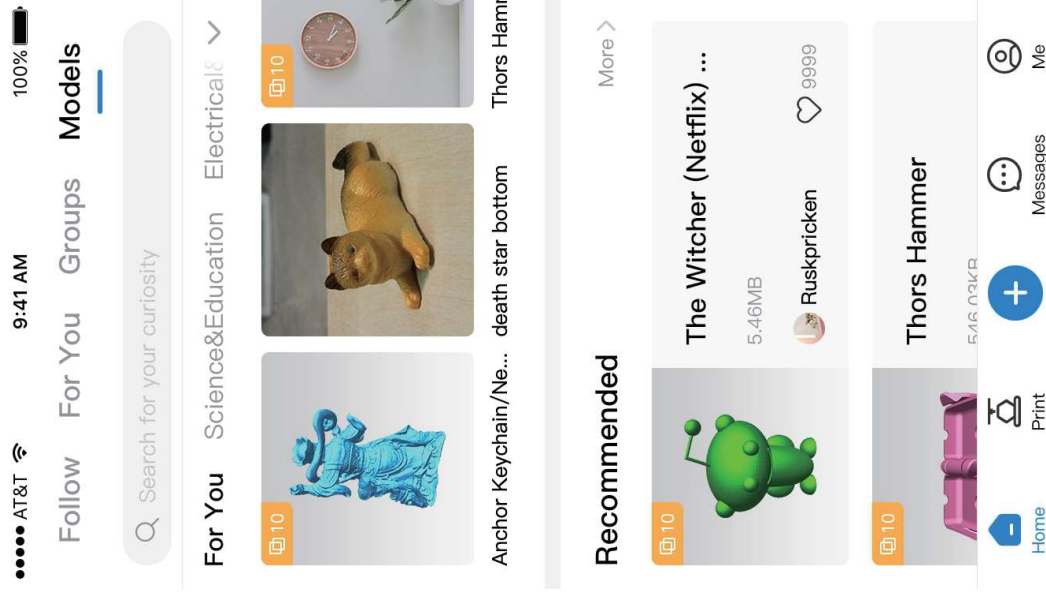
④ Data Export

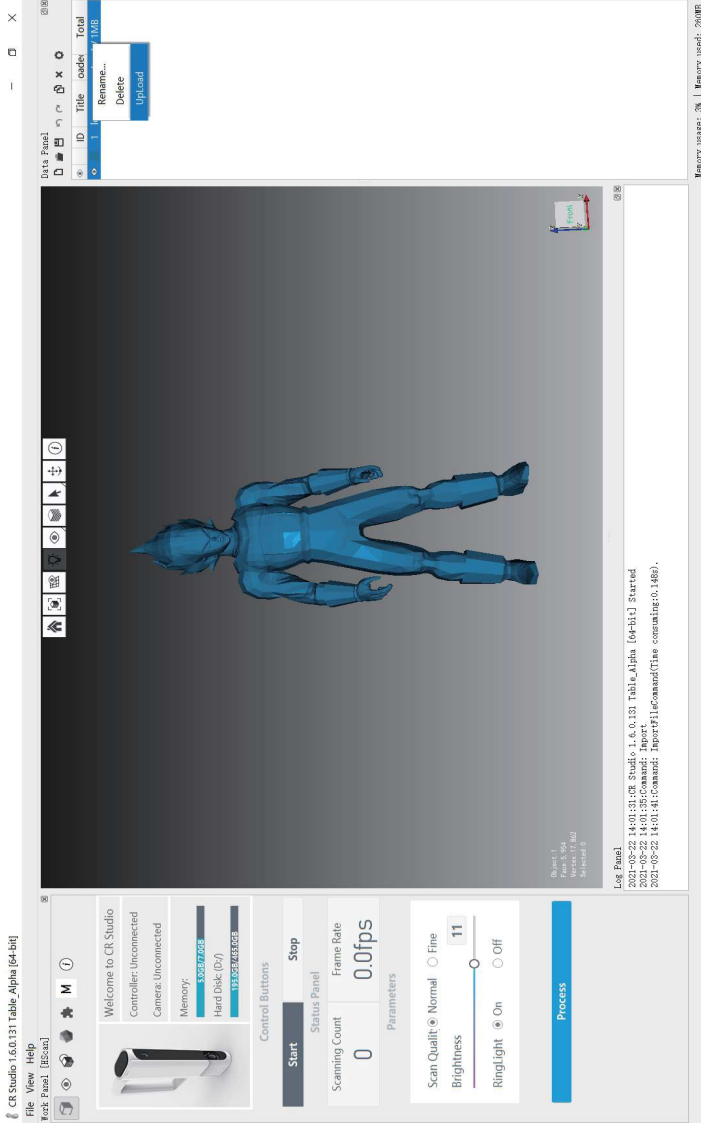
After the automatic processing is completed, click the Export button to export the model data to the specified path.



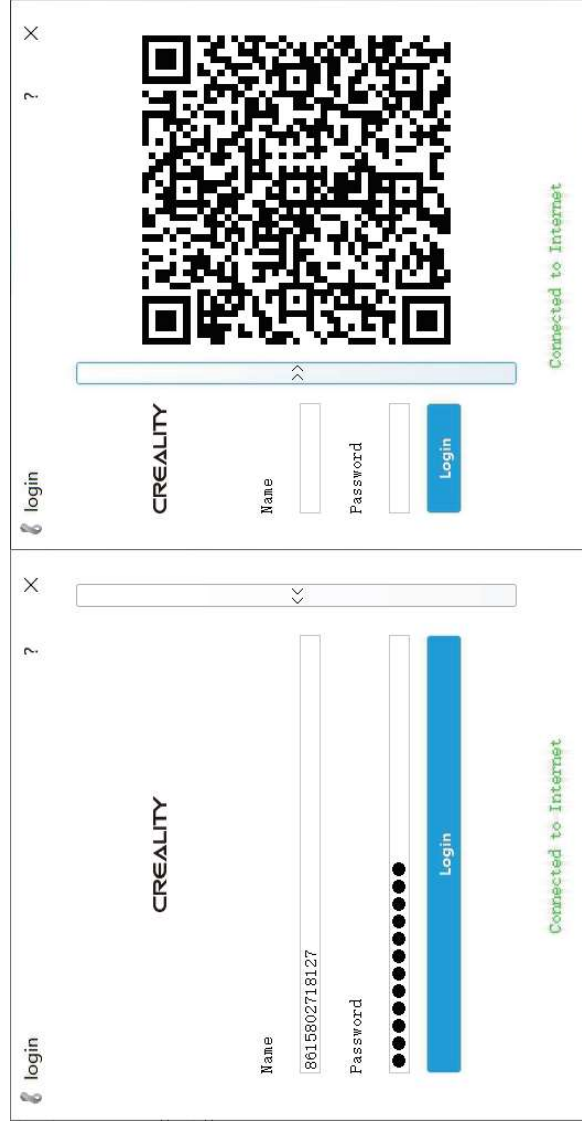
⑤ Data upload

The scanned data can be uploaded to the creality cloud with one click.





Select the data to be upioaded from the project list and right-click the upioad option menu.



If not logged in, please log in first. Two ways to log in and please remember to add the country code before the user name.

Upload


Name:

Type:

Share Open Close

Describe


3d print







Enter the model group information and click the upload button to upload the data.

dragon

Uploaded 2021-03-22 14:05:13

 用户9438385619

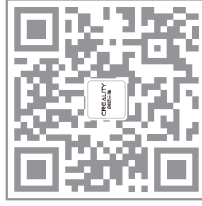
 Like 0  Collect 0

 Comments 0  Cloud Slice 0

Share The Model Group

After uploading, you can copy the link and connect it to the browser to preview the upload model.

3D Printing Industry Evangelist



SHENZHEN CREALITY 3D TECHNOLOGY CO., LTD.

Add : 18F, JinXiuHongDu Building, Meilong Blvd.,

Longhua Dist., Shenzhen, China 518131

Official Website: www.creality.com Tel: +86 755-8523 4565

E-mail: info@creality.com cs@creality.com