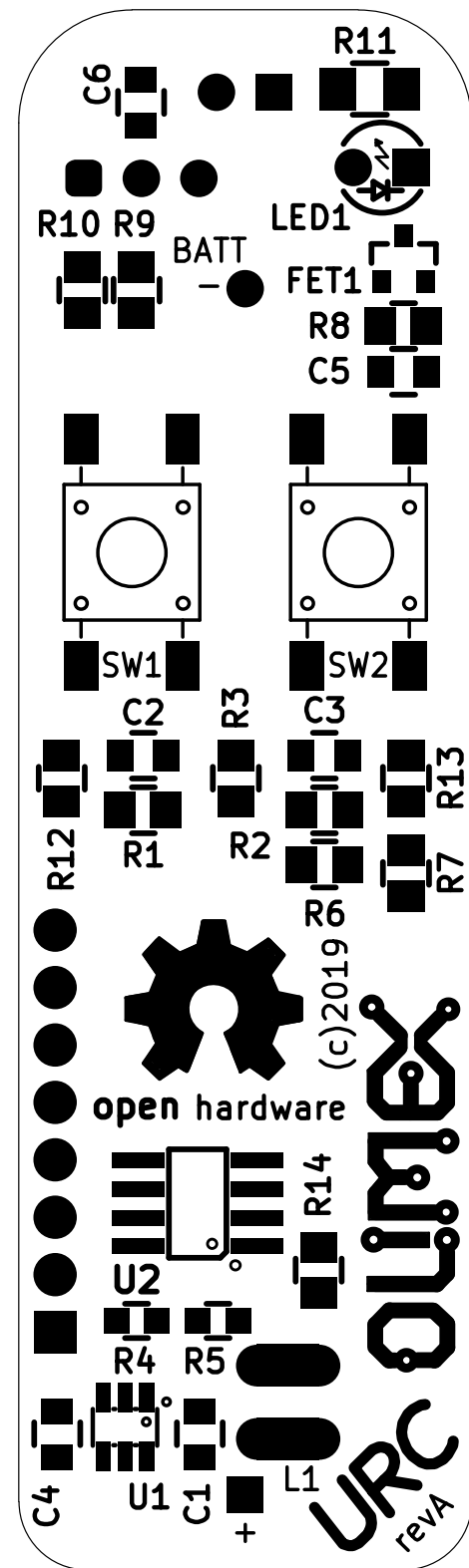


U1 - SY7080
 R4 - 100K 1%
 R5 - 56.2K 1%
 C1, C4, C6 - 22uF
 L1 - 4.7uH
 R9, R10, R12, R13, R14 - 2K
 R1 - 22K
 R7 - 100K
 R2, R3, R6, R8 - 10K
 R11 - 4.7R
 C2, C3, C5 - 2.2uF
 FET1 - WNM2016
 SW1, SW2 - T1102
 LED1 - 3mm RED



LED2 - IR333
U3 - VS1838
BAT1

