

RapidChange™

# Revo™ Hemera

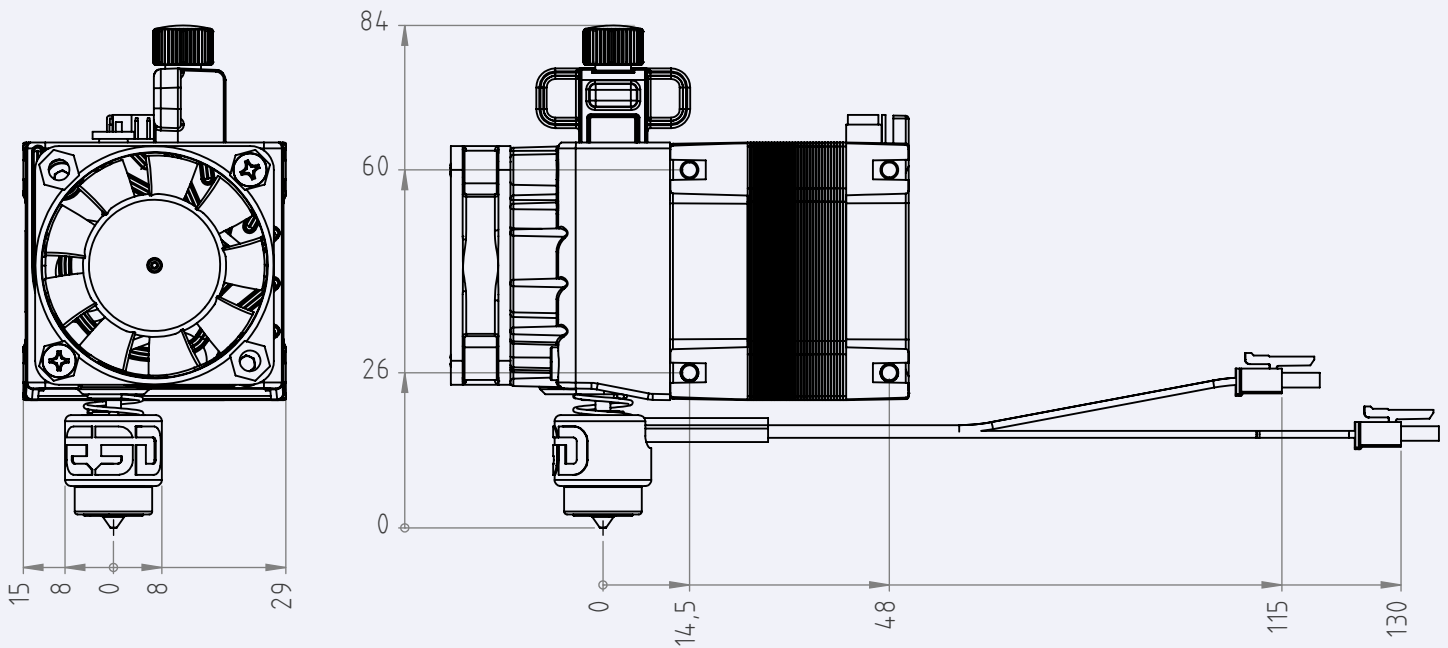
DATA SHEET



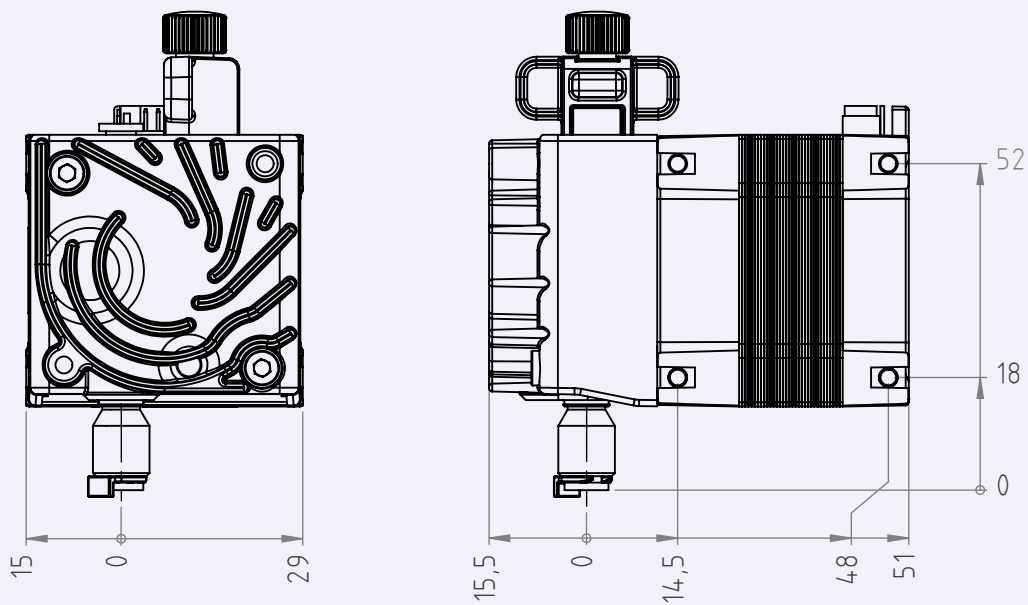
## SUMMARY

- Drive type: dual drive with adjustable tension idler
- Max printing temperature: 300°C (upgradable to 500°C)
- Mass: 352g (including Revo hotside)
- Max pushing force: ~10kg (depending on filament)
- Flow rate: 10mm<sup>3</sup>/sec (depending on filament)
- Nominal steps per mm (x16): 397
- Max motor current 1.33A
- Filament diameter: 1.75mm

## DIRECT DRIVE DIMENSIONS



## BOWDEN DIMENSIONS



## MASS

Direct: 352g

Bowden 327g

## PERFORMANCE CHARACTERISTICS

Max pushing force: 10kg (depending on filament)

Maximum nominal volumetric throughput: 600mm<sup>3</sup>/min (PLA at 220°C)

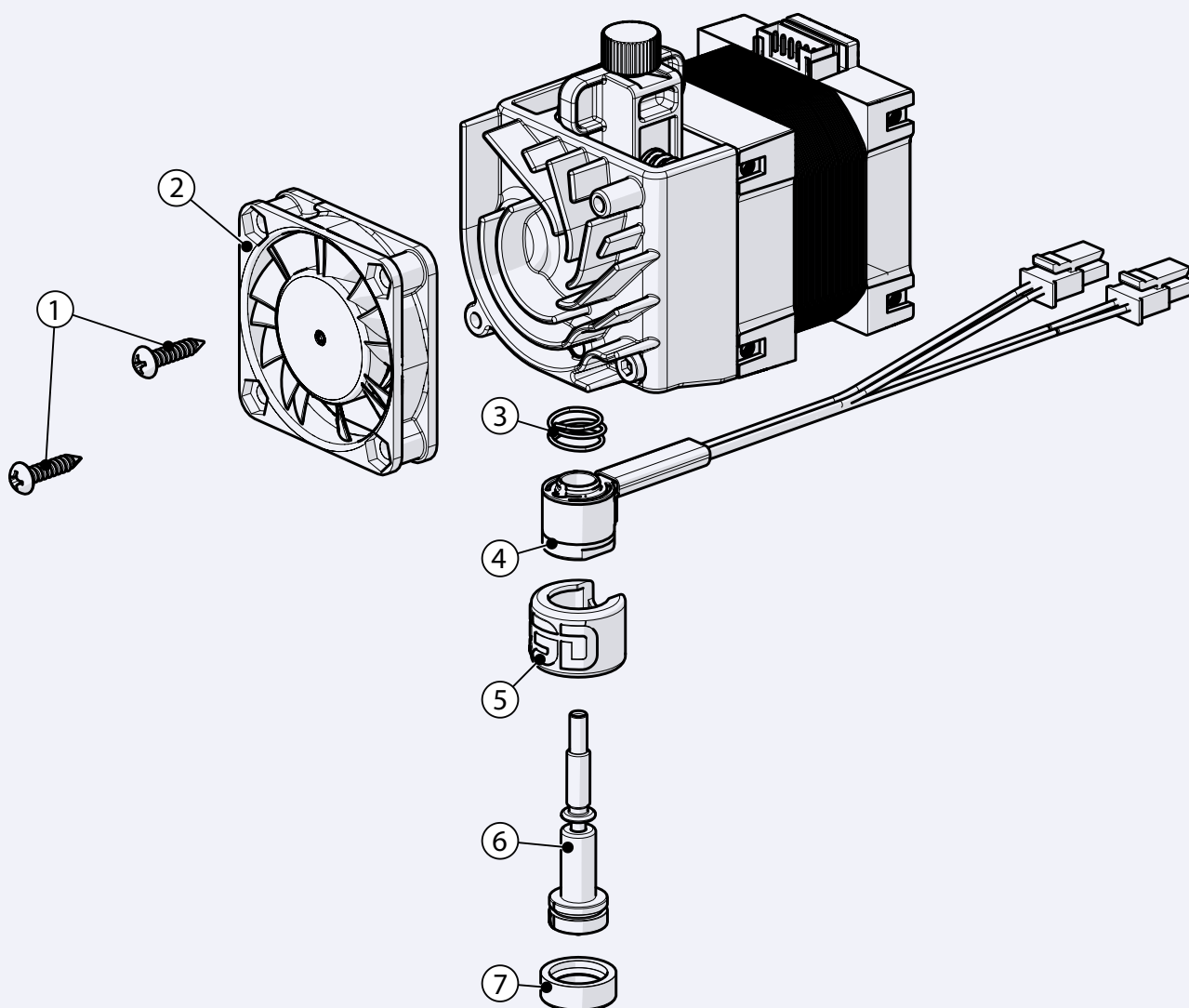
Maximum printing temperature: 300°C

## SERVICE TEMPERATURES

Note, these are max ambient service temperatures of the components used, and not a guaranteed operating temperature of the system

- Fan: 50°C
- Motor: 85°C
- Motor: 85°C
- Polymer bushing: 90°C
- Bearings: 100°C
- Acetal idler components: 120°C

## EXPLODED VIEW



1. Self-tapping screws
2. 40 x 40 x 10mm fan
3. Revo spring
4. Revo HeaterCore

5. Revo HeaterCore sock
6. Revo Nozzle
7. Revo Nozzle sock

## CHANGELOG

- Edition 1: Published 17/09/21
- Approved: RY 17/09/21

- Edition 2: Published 12/10/21
- Approved: RY 13/09/21
- Notes: Revo Thread renamed Revo Micro

- Edition 3: Published 07/12/21
- Approved: DR 07/12/21
- Notes: Flow rate units changed to 10mm<sup>3</sup>/sec

