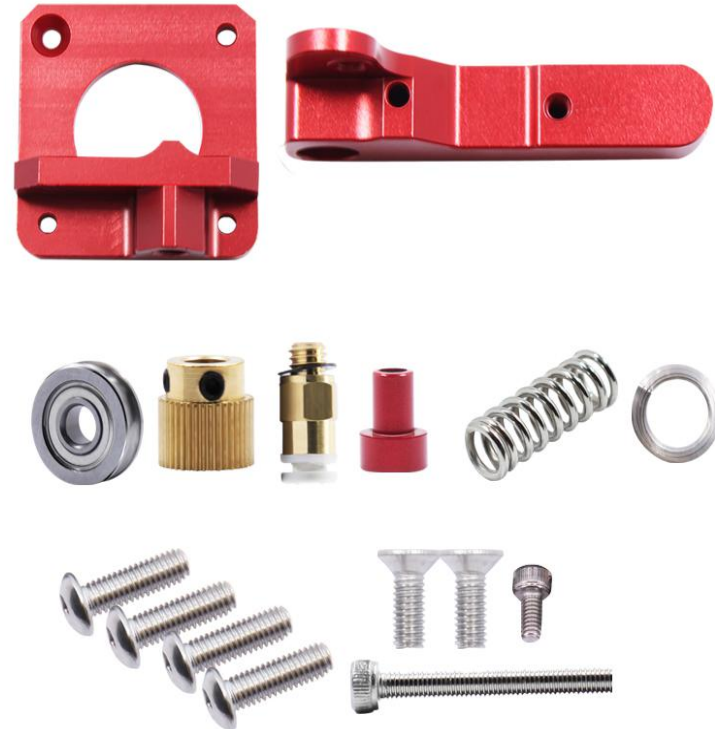


WAY TO ASSEMBLE UPGRADED CR10 EXTRUDER-OLEARN (Stock Code: KT080)

Overall there are 5 steps to assemble this kit

1. Screw the drive gear on stepper motor axis
2. Assemble main block of the extruder on stepper motor
3. Install the V-slot bearing in extruder handle
4. Install the extruder handle & spring on the main block
5. Install the bowden and test



Extruder With All Parts Needed

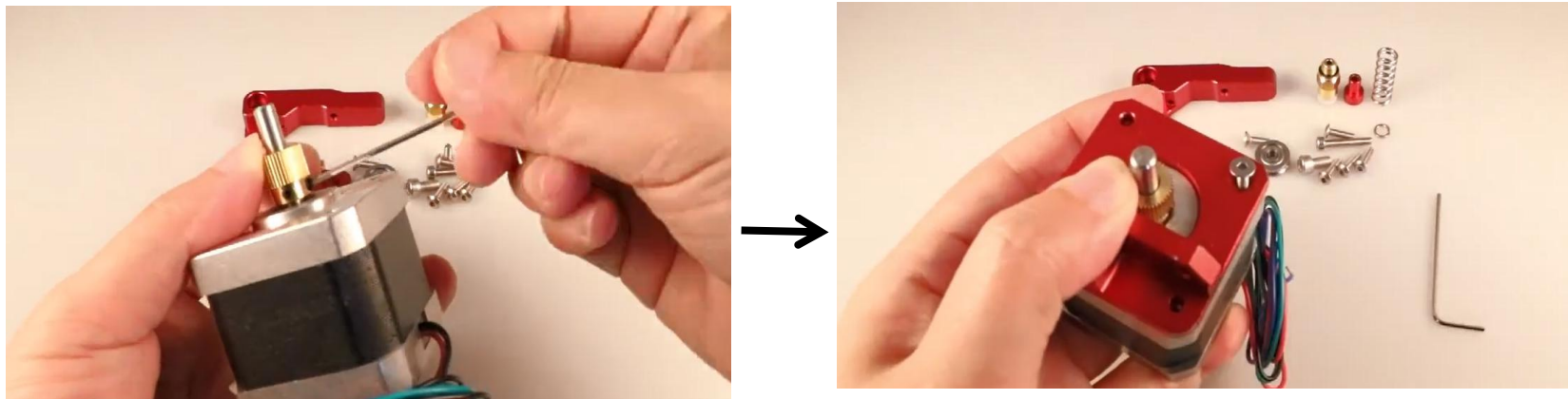
Steps:

1. Prepare the drive gear & stepper motor & main block



Note: Just screw the bigger hole whether is the left extruder or right extruder. See left picture, the hole marked yellow

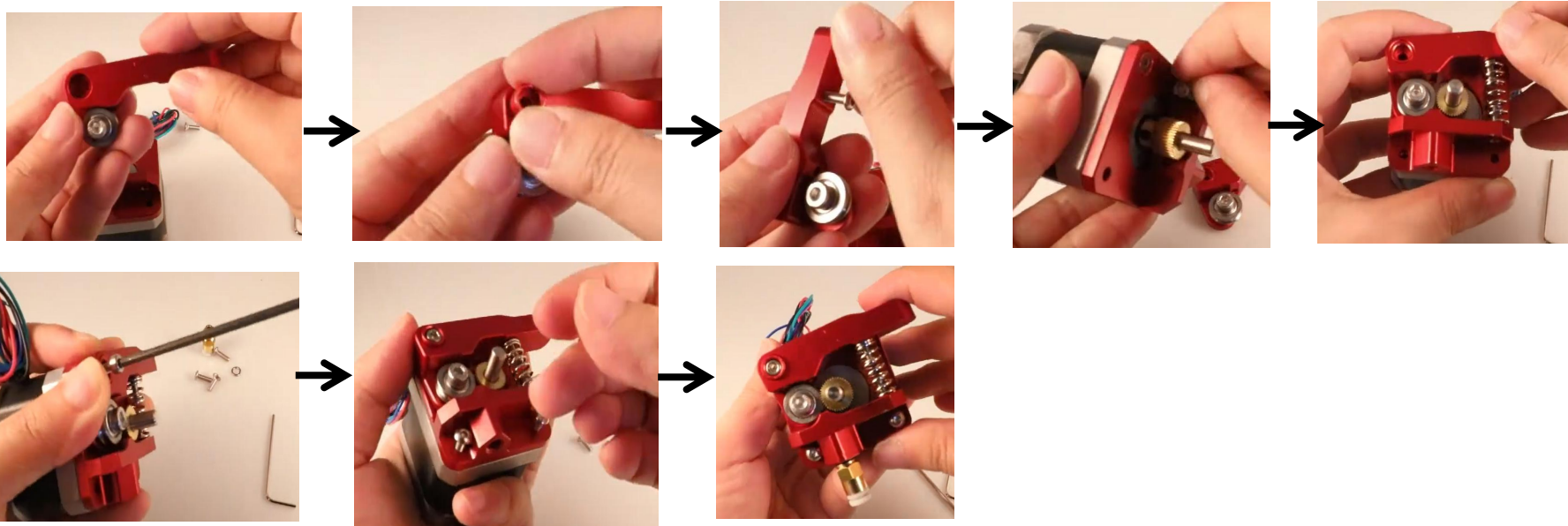
2. Screw the drive gear on stepper motor axis & main block on stepper motor



3. Prepare the extruder handle & V-slot bearing & spring & red nut & screws & bowden



6. Install bearing & red nut & screw & spring & handle & bowden



Assembled Kit:

