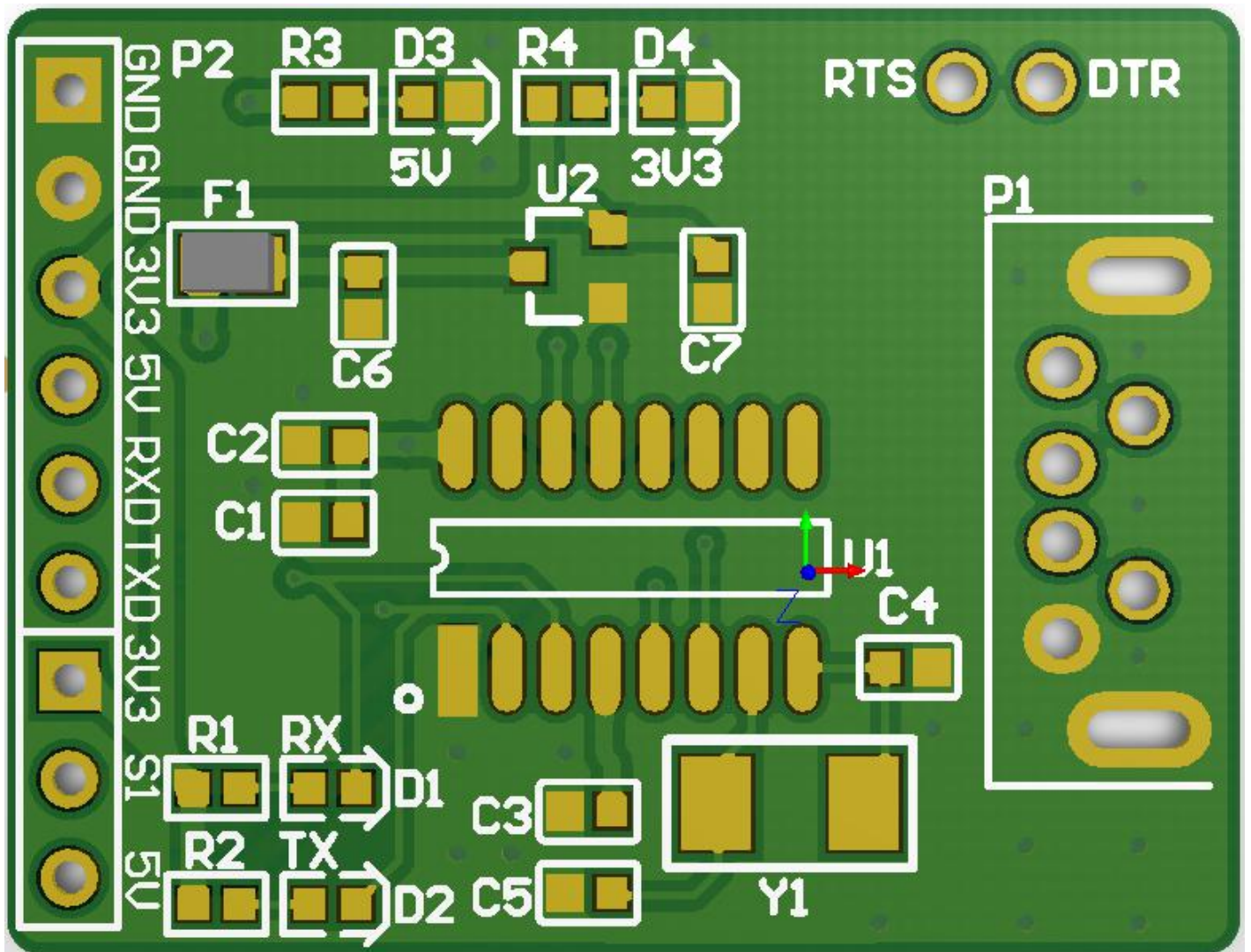


# BTT WRITER V1.0

CH340 debugger module

## User Manual



SHENZHEN BIGTREE TECHNOLOGY CO., LTD.

BIGTREE-TECH.COM

VERSION 1.0

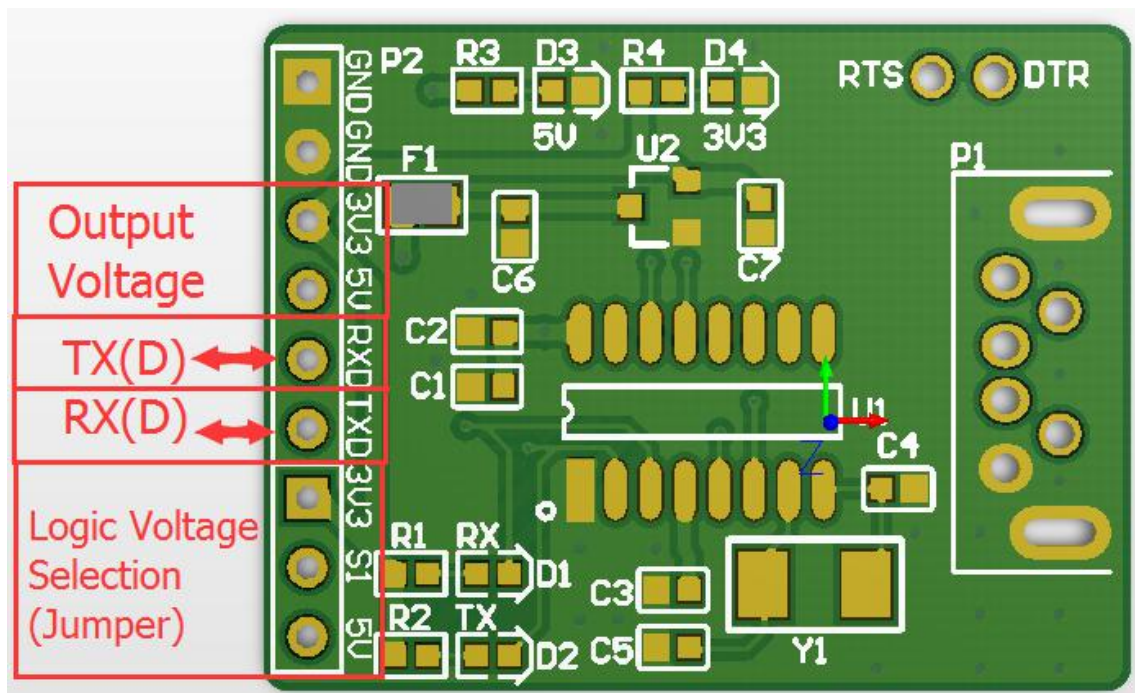
## Product Introduction

BigTree Technology Co., Ltd. developed this module for the use on firmware flashing, serial port debugging and so on.

## Board specifications

- 1) Size: 32 x 24.6mm
- 2) Input voltage: 5V DC via USB

## Wiring



For ATMEGA2560 and other chips operating at 5V (for example: MEGA2560+Ramps1.4, Ramps1.6, Ramps1.6+, KFB3.0), the jumper s1 is set to 5V.

For chips operating at 3.3V (for example: SKR V1.1, SKR MINI V1.1, SKR V1.3, SKR PRO V1.1, SKR MINI E3, SKR E3 DIP V1.0) the jumper s1 is set to 3.3V.

## Example: BTT ESP-01S WIFI module Firmware Flashing

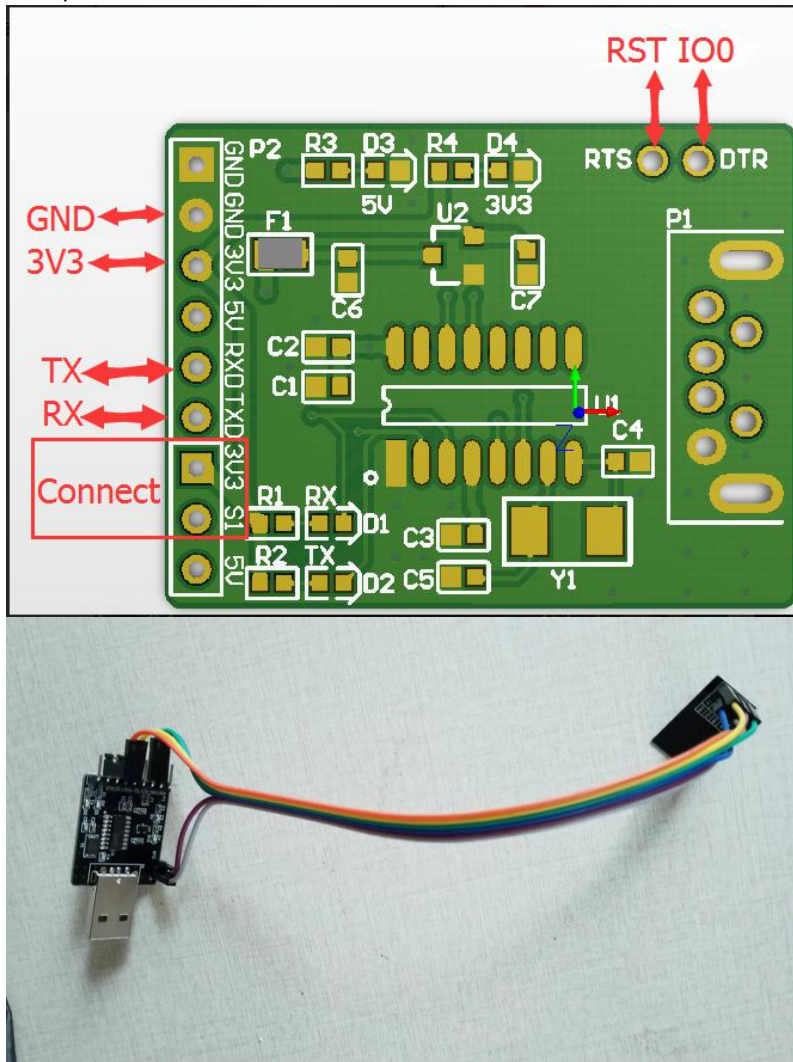
The flashing tool:

<https://drive.google.com/open?id=1yD1rCoyystkcUUF3706VUQAnc-Mdyvi7>

The firmware for BTT ESP-01S WIFI module:

<https://github.com/bigtreetech/BIGTREETECH-SKR-PRO-V1.1/blob/master/firmware/esp-01s/esp3d.bin>

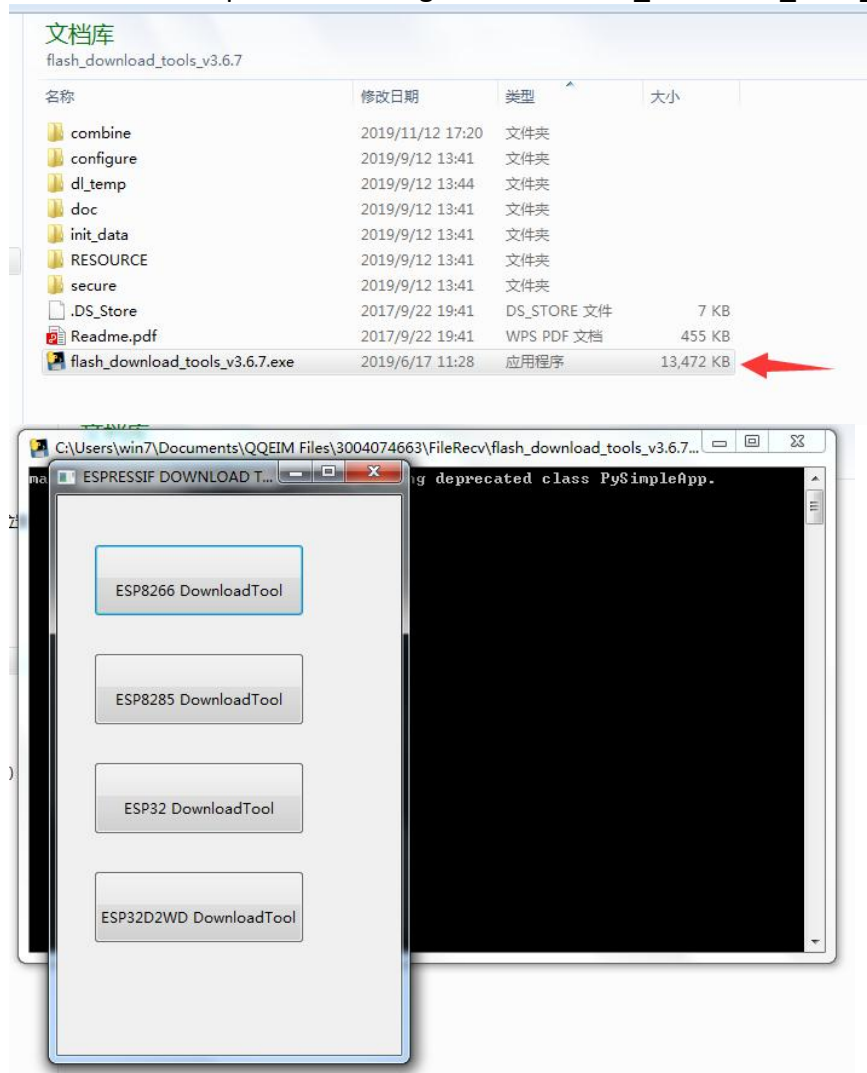
First, connect the ESP-01S module to the BTT Writer V1.0 module.



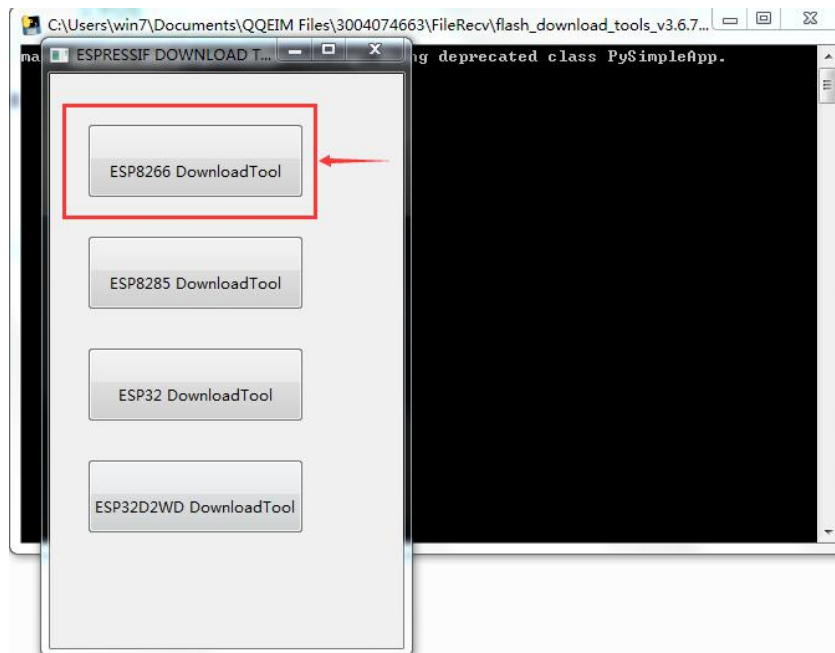
Then connect the module to the PC via USB, you can find the serial port for CH340 in Windows Device Manager.



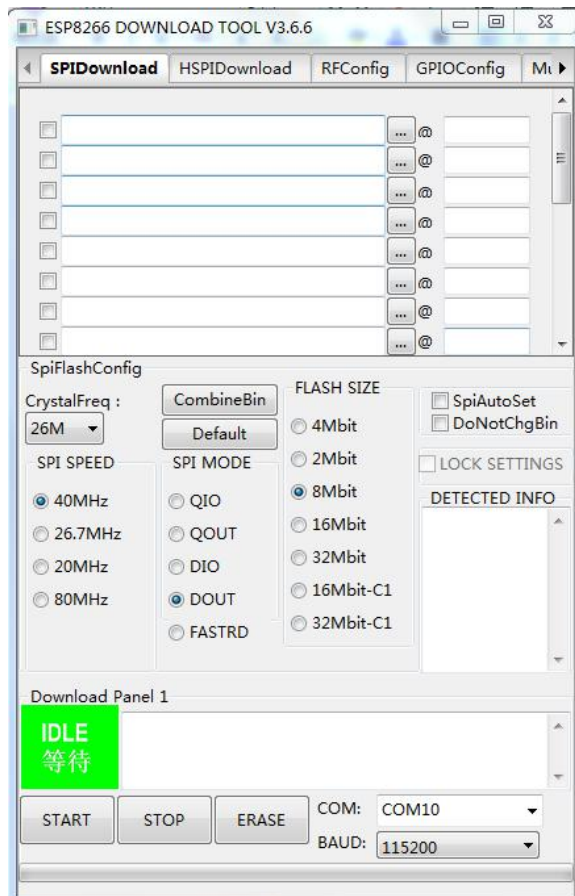
Double click to open the flashing software: flash\_download\_tools\_v3.6.7.exe



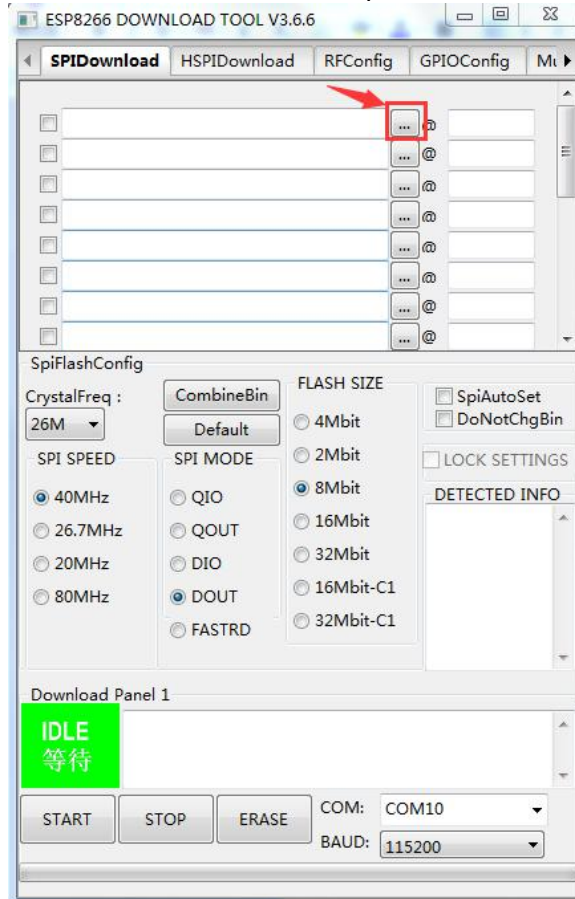
Select the "ESP8266 DownloadTool"

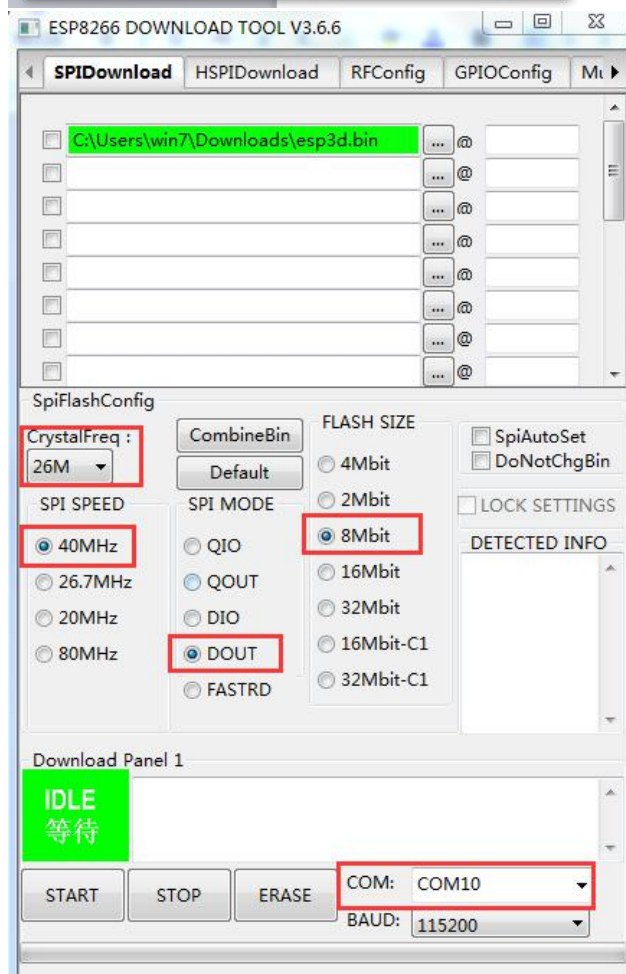
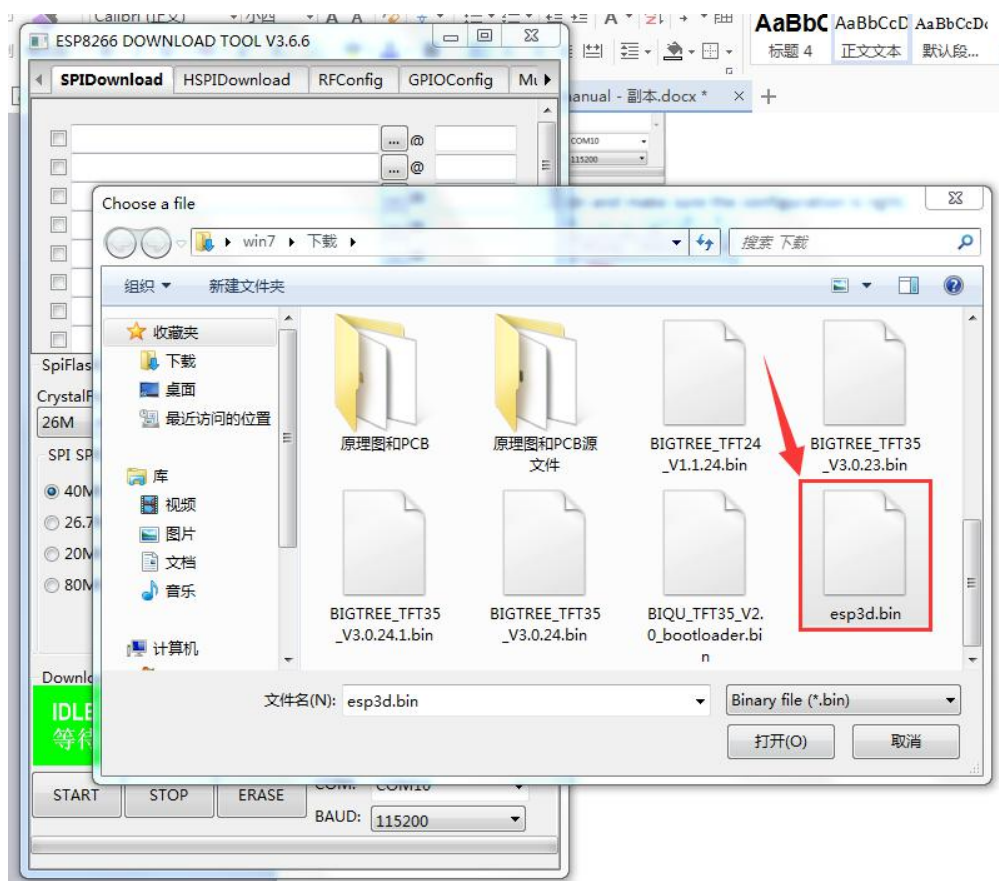




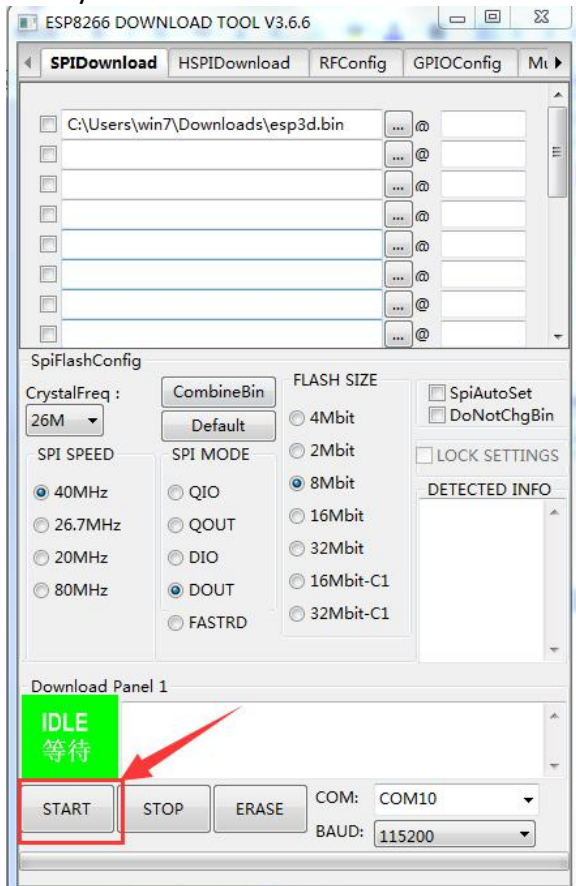


Choose the firmware file esp3d.bin and make sure the configuration is right.





Finally click "START"



The flashing is finished.

