



BLTouch Guidebook for Creality V2 Mainboard



Website



Facebook

Scan QR code to view detailed instruction

AUTO BED LEVELING SENSOR FOR 3D PRINTER

This guidebook is for Creality V2 mainboard. It includes but is not limited to the following 3D printer:
CR-10S/CR-10 S4/CR-10 S5/CR20.
File download: <https://www.creality3d.cn/download/>

SHENZHEN CREALITY 3D TECHNOLOGY CO., LTD.

12/F, Block 3, JinChengYuan, Huafan Road, Tongsheng Community, Dalang,
Longhua District, Shenzhen, China, 518109
Official Website: www.creality3d.cn
Tel: +86 755-2103 4006
E-mail: info@creality3d.cn cs@creality3d.cn

① Packing List



BLTouch



Connectors



Rack

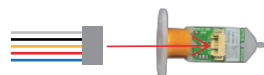


M3X8 2PCS

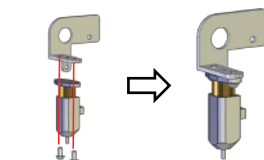


M3X6 2PCS

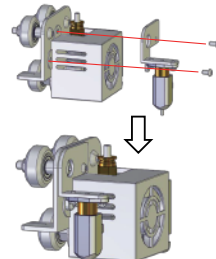
② Install BLTouch



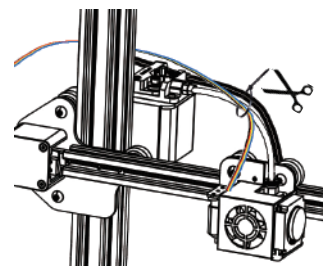
1、Insert connectors into 5 Pin Port.



2、Install BLTouch on the rack with 2 M3X6 screws

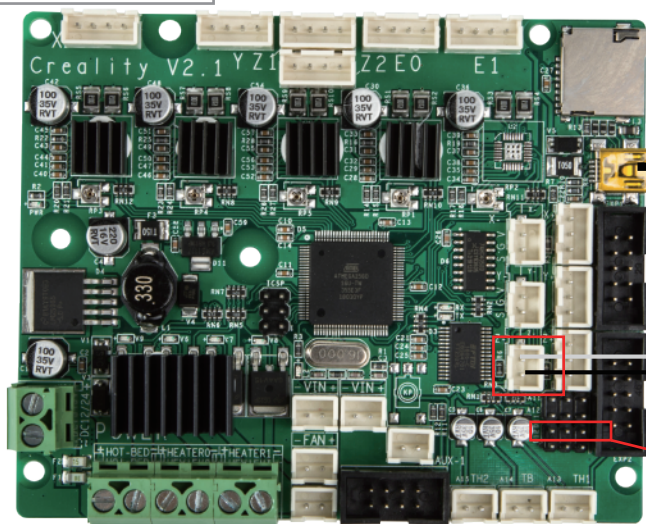


3、Loosen all fan cover screws, Install the fan on the corresponding position with 2 M3X8 screws



4、Secure the cable to the guide tube and cable with a cable tie and bypass the rear side of the gantry.

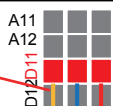
③ Circuit Wiring



USB Cable

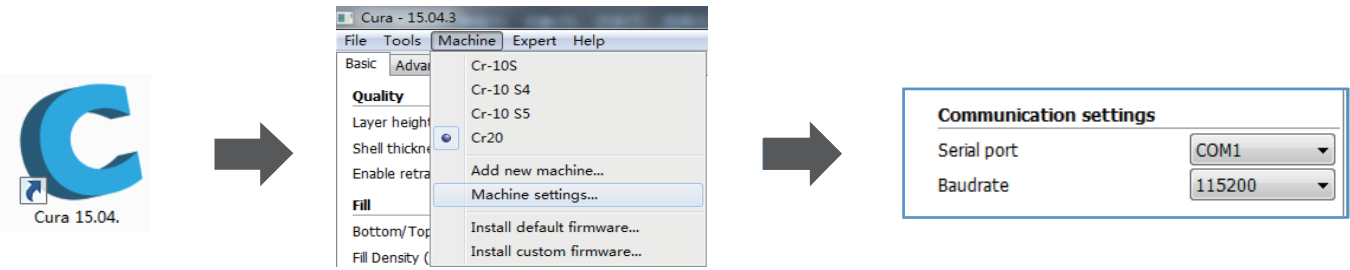


PC

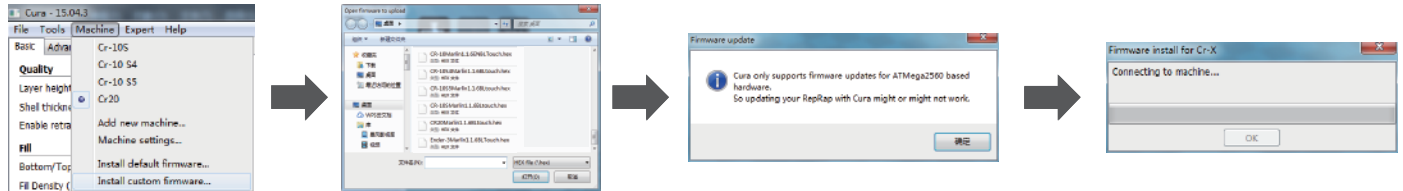


- 1、Open the control box and find out the mainboard.
- 2、Unplug the Z limit switch (Z port), and insert the connectors.
- 3、Insert connectors into the mainboard D11 pins as the color shows.
- 4、Close the control box.
- 5、Connect ISP Pinboard and Burner.
- 6、Connect computer to update firmware with USB cable.

④ Update Firmware



Open Cura→Machine→Machine settings→Select Serial port (COM) & Baudrate (115200) .

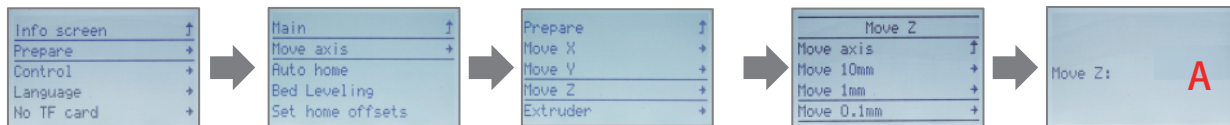


Machine→Install custom firmware→Select .hex file→Click OK to update, Waiting until it is finished, then click ok.

⑤ Platform Adjustment

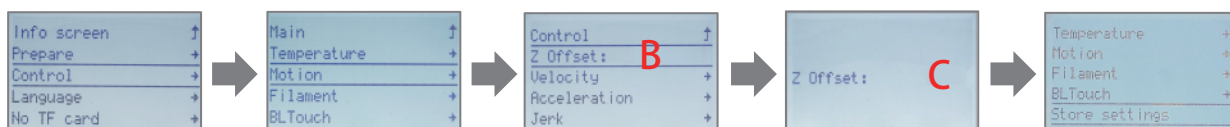


1、Prepare→Auto home, and wait until it stops.



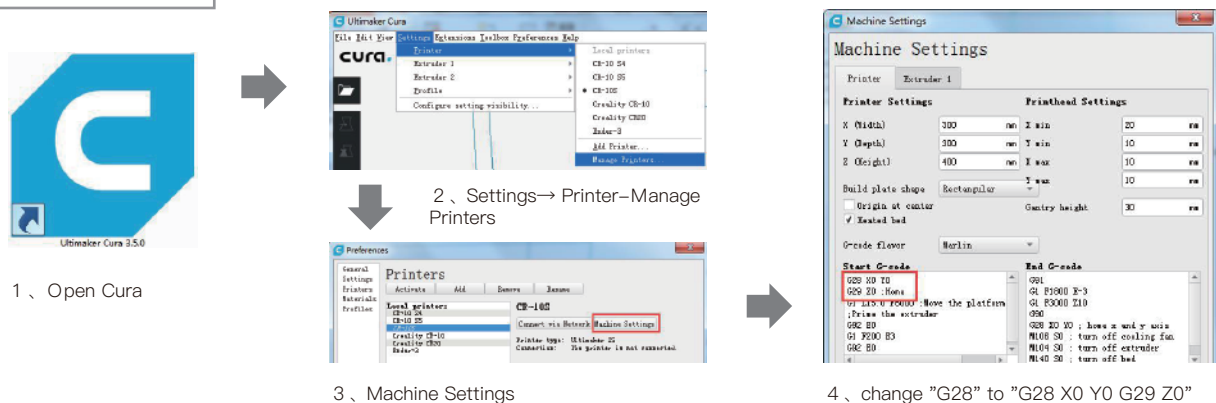
2、Prepare→Move axis→Move Z→Move 0.1mm→Rotate the knob until the distance between them is about 0.2mm (as a sheet of A4 paper) , write down the value of A.

3、Rotate the knob until the distance between them is about 0.2mm (as a sheet of A4 paper) , write down the value of A (For example, figure 3) .



4、Control→Motion→Z Offset→write down the value of B, then rotate the knob until it comes out as: C=B+A. Return Control and Select Store settings.

⑥ Software Settings



1、Open Cura

2、Settings→Printer→Manage Printers

3、Machine Settings

4、change "G28" to "G28 X0 Y0 G29 Z0"